

## Survey Report

No. : CS/2011/30021A Date : 2011/04/07 Page : 1 of 38

ZYWYN CORPORATION  
1270, OAKMEAD PARKWAY, SUITE 201, SUNNYVALE, CA 94085, U.S.A.



**The following test reports/information were submitted and identified by the client as :**

Sample Description : SOP FAMILY  
Style/Item No. : ZT202LEET, ZT207LEET, ZT208LEET, ZT211LEET, ZT213LFET, ZT232LEET, ZT3220LEET, ZT3222LEET, ZT3222LFET, ZT3232LEET, ZT3241LEET, ZT13085LEEN, ZT202LEEN, ZT232LEEN, ZT3070LEEN, ZT3071LEEN, ZT3072LEEN, ZT3075LEEN, ZT3077LEEN, ZT3078LEEN, ZT3232LEEN, ZT3232LFEN, ZT3483LEEN, ZT3485LEEN, ZT3488LEEN, ZT3490LEEN, ZT3491LEEN, ZT483HLEEN, ZT483LEEN, ZT485HLEEN, ZT485LEEN, ZT487LEEN, ZT488LEEN, ZT489LEEN, ZT490LEEN, ZT491LEEN, ZSP4422ALCN  
Testing Period : 2011/02/18 TO 2011/02/25

=====  
**Test Results** : Please refer to next page(s).

\* This report is combined with reports of CE/2011/23145, CE/2011/23146, CE/2011/23147 and CE/2011/23148 \*



**Chenyu Kung / Operation Manager**  
Signed for and on behalf of  
**SGS TAIWAN LTD.**  
**Chemical Laboratory – Taipei**

Unless otherwise stated the results shown in this test report refer only to the sample(s) tested. This test report cannot be reproduced, except in full, without prior written permission of the Company. 除非另有說明，此報告結果僅對測試的樣品負責。本報告未經本公司書面許可，不可部份複製。  
This document is issued by the Company subject to its General Conditions of Service printed overleaf, available on request or accessible at [www.sgs.com/terms\\_and\\_conditions.htm](http://www.sgs.com/terms_and_conditions.htm) and for electronic format documents, subject to Terms and Conditions for Electronic Documents at [www.sgs.com/terms\\_e-document.htm](http://www.sgs.com/terms_e-document.htm). Attention is drawn to the limitation of liability, indemnification and jurisdiction issues defined therein. Any holder of this document is advised that information contained hereon reflects the Company's findings at the time of its intervention only and within the limits of Client's instructions, if any. The Company's sole responsibility is to its Client and this document does not exonerate parties to a transaction from exercising all their rights and obligations under the transaction documents. This document cannot be reproduced except in full, without prior written approval of the Company. Any unauthorized alteration, forgery or falsification of the content or appearance of this document is unlawful and offenders may be prosecuted to the fullest extent of the law.

# Survey Report

No. : CS/2011/30021A Date : 2011/04/07

Page : 2 of 38

ZYWYN CORPORATION

1270, OAKMEAD PARKWAY, SUITE 201, SUNNYVALE, CA 94085, U.S.A.



## Test Result(s)

PART NAME No.1 : BODY (CE/2011/23145 NO.1)  
 PART NAME No.2 : PLATING LAYER OF SILVER COLORED METAL (CE/2011/23145 NO.2)  
 PART NAME No.3 : BODY (CE/2011/23146)  
 PART NAME No.4 : BODY (CE/2011/23147)  
 PART NAME No.5 : BODY (CE/2011/23148)

Test Item(s):	Unit	Method	MDL	Result				
				No.1	No.2	No.3	No.4	No.5
Cadmium (Cd)	mg/kg	With reference to IEC 62321: 2008 and performed by ICP-AES.	2	n.d.	---	---	---	---
	mg/kg	IEC 62321: 2008 application of modified digestion by surface etching and performed by ICP-AES.	2	---	n.d.	---	---	---
Lead (Pb)	mg/kg	With reference to IEC 62321: 2008 and performed by ICP-AES.	2	n.d.	---	---	---	---
	mg/kg	IEC 62321: 2008 application of modified digestion by surface etching and performed by ICP-AES.	2	---	23	---	---	---
Mercury (Hg)	mg/kg	With reference to IEC 62321: 2008 and performed by ICP-AES.	2	n.d.	---	---	---	---
	mg/kg	IEC 62321: 2008 application of modified digestion by surface etching and performed by ICP-AES.	2	---	n.d.	---	---	---

Unless otherwise stated the results shown in this test report refer only to the sample(s) tested. This test report cannot be reproduced, except in full, without prior written permission of the Company. 除非另有說明，此報告結果僅對測試的樣品負責。本報告未經本公司書面許可，不可部份複製。

This document is issued by the Company subject to its General Conditions of Service printed overleaf, available on request or accessible at [www.sgs.com/terms\\_and\\_conditions.htm](http://www.sgs.com/terms_and_conditions.htm) and for electronic format documents, subject to Terms and Conditions for Electronic Documents at [www.sgs.com/terms\\_e-document.htm](http://www.sgs.com/terms_e-document.htm). Attention is drawn to the limitation of liability, indemnification and jurisdiction issues defined therein. Any holder of this document is advised that information contained hereon reflects the Company's findings at the time of its intervention only and within the limits of Client's instructions, if any. The Company's sole responsibility is to its Client and this document does not exonerate parties to a transaction from exercising all their rights and obligations under the transaction documents. This document cannot be reproduced except in full, without prior written approval of the Company. Any unauthorized alteration, forgery or falsification of the content or appearance of this document is unlawful and offenders may be prosecuted to the fullest extent of the law.

# Survey Report

No. : CS/2011/30021A Date : 2011/04/07

Page : 3 of 38

ZYWYN CORPORATION

1270, OAKMEAD PARKWAY, SUITE 201, SUNNYVALE, CA 94085, U.S.A.



Test Item(s):	Unit	Method	MDL	Result				
				No.1	No.2	No.3	No.4	No.5
Hexavalent Chromium Cr(VI) by alkaline extraction	mg/kg	With reference to IEC 62321: 2008 and performed by UV-VIS.	2	n.d.	---	---	---	---
Hexavalent Chromium Cr(VI) by Spot test / boiling water extraction	**	With reference to IEC 62321: 2008 and performed by Spot test / boiling water extraction Method. (See Note 4)	0.02mg/kg with 50 cm <sup>2</sup> surface area	---	Negative	---	---	---
Beryllium (Be)	mg/kg	With reference to US EPA Method 3050B for Beryllium Content. Analysis was performed by ICP-AES.	2	---	---	---	---	n.d.
Cobalt dichloride (CAS No.: 7646-79-9)	mg/kg	SGS In-House method-RSTS-EE-SVHC-004. Analyzed by ICP-AES.	5	---	---	---	---	n.d.
Perfluorooctane sulfonates (PFOS) PFOS – Acid PFOS – Metal Salt PFOS – Amide	mg/kg	With reference to US EPA 3540C: 1996 method for PFOS Content. Analysis was performed by LC/MS.	10	---	---	---	n.d.	---
PFOA (CAS No.: 335-67-1)	mg/kg	With reference to US EPA 3540C: 1996 method for PFOA Content. Analysis was performed by LC/MS.	10	---	---	---	n.d.	---
Polychlorinated Biphenyls (PCBs) (CAS No.: 1336-36-3)	mg/kg	With reference to US EPA 3540C method. Analysis was performed by GC/MS.	0.5	---	---	---	---	n.d.
Polychlorinated Naphthalene (PCNs)	mg/kg	With reference to US EPA 3540C method. Analysis was performed by GC/MS.	5	---	---	---	---	n.d.
Polychlorinated Terphenyls (PCTs)	mg/kg	With reference to US EPA 3540C method. Analysis was performed by GC/MS.	0.5	---	---	---	---	n.d.

Unless otherwise stated the results shown in this test report refer only to the sample(s) tested. This test report cannot be reproduced, except in full, without prior written permission of the Company. 除非另有說明，此報告結果僅對測試的樣品負責。本報告未經本公司書面許可，不可部份複製。

This document is issued by the Company subject to its General Conditions of Service printed overleaf, available on request or accessible at [www.sgs.com/terms\\_and\\_conditions.htm](http://www.sgs.com/terms_and_conditions.htm) and for electronic format documents, subject to Terms and Conditions for Electronic Documents at [www.sgs.com/terms\\_e-document.htm](http://www.sgs.com/terms_e-document.htm). Attention is drawn to the limitation of liability, indemnification and jurisdiction issues defined therein. Any holder of this document is advised that information contained hereon reflects the Company's findings at the time of its intervention only and within the limits of Client's instructions, if any. The Company's sole responsibility is to its Client and this document does not exonerate parties to a transaction from exercising all their rights and obligations under the transaction documents. This document cannot be reproduced except in full, without prior written approval of the Company. Any unauthorized alteration, forgery or falsification of the content or appearance of this document is unlawful and offenders may be prosecuted to the fullest extent of the law.

# Survey Report

No. : CS/2011/30021A Date : 2011/04/07

Page : 4 of 38

ZYWYN CORPORATION

1270, OAKMEAD PARKWAY, SUITE 201, SUNNYVALE, CA 94085, U.S.A.



Test Item(s):	Unit	Method	MDL	Result				
				No.1	No.2	No.3	No.4	No.5
Alkanes, C10-13, chloro (Short Chain Chlorinated Paraffins) (CAS No.: 85535-84-8)	%	With reference to US EPA 3540C method. Analysis was performed by GC/MS.	0.01	---	---	---	---	n.d.
Formaldehyde (CAS No.: 50-00-0)	mg/kg	With reference to ISO 17226-1(2008). Analysis was performed by HPLC/DAD.	3	---	---	---	---	n.d.
PVC	**	Analysis was performed by FTIR and FLAME Test.	-	---	---	---	---	Negative
2- (3,5-di-tert-butyl-2-hydroxyphenyl)-2H-benzotriazole (CAS No.: 3846-71-7)	mg/kg	With reference to US EPA 3540C method. Analysis was performed by GC/MS.	5	---	---	---	---	n.d.
Bromomethane (CAS No.: 74-83-9)	mg/kg	With reference to US EPA 5021 method. Analysis was performed by GC/MS.	1	---	---	---	---	n.d.
Dimethyl Fumarate (CAS No.: 624-49-7)	mg/kg	With reference to US EPA 3550C method. Analysis was performed by GC/MS.	0.1	---	---	---	---	n.d.
<b>Halogen</b>								
Halogen-Fluorine (F) (CAS No.: 14762-94-8)	mg/kg	With reference to BS EN 14582:2007. Analysis was performed by IC.	50	---	---	n.d.	---	---
Halogen-Chlorine (Cl) (CAS No.: 22537-15-1)			50	---	---	n.d.	---	---
Halogen-Bromine (Br) (CAS No.: 10097-32-2)			50	---	---	n.d.	---	---
Halogen-Iodine (I) (CAS No.: 14362-44-8)			50	---	---	n.d.	---	---
<b>Organic-tin compounds</b>								
Tributyl Tin (TBT) (CAS No.: 688-73-3)	mg/kg	With reference to DIN 38407-13. Analysis was performed by GC/FPD.	0.03	---	---	---	---	n.d.

Unless otherwise stated the results shown in this test report refer only to the sample(s) tested. This test report cannot be reproduced, except in full, without prior written permission of the Company. 除非另有說明，此報告結果僅對測試的樣品負責。本報告未經本公司書面許可，不可部份複製。

This document is issued by the Company subject to its General Conditions of Service printed overleaf, available on request or accessible at [www.sgs.com/terms\\_and\\_conditions.htm](http://www.sgs.com/terms_and_conditions.htm) and for electronic format documents, subject to Terms and Conditions for Electronic Documents at [www.sgs.com/terms\\_e-document.htm](http://www.sgs.com/terms_e-document.htm). Attention is drawn to the limitation of liability, indemnification and jurisdiction issues defined therein. Any holder of this document is advised that information contained hereon reflects the Company's findings at the time of its intervention only and within the limits of Client's instructions, if any. The Company's sole responsibility is to its Client and this document does not exonerate parties to a transaction from exercising all their rights and obligations under the transaction documents. This document cannot be reproduced except in full, without prior written approval of the Company. Any unauthorized alteration, forgery or falsification of the content or appearance of this document is unlawful and offenders may be prosecuted to the fullest extent of the law.

# Survey Report

No. : CS/2011/30021A Date : 2011/04/07

Page : 5 of 38

ZYWYN CORPORATION

1270, OAKMEAD PARKWAY, SUITE 201, SUNNYVALE, CA 94085, U.S.A.



Test Item(s):	Unit	Method	MDL	Result				
				No.1	No.2	No.3	No.4	No.5
Triphenyl Tin (TphT) (CAS No.: 668-34-8)	mg/kg	With reference to DIN 38407-13. Analysis was performed by GC/FPD.	0.03	---	---	---	---	n.d.
Dibutyl Tin (DBT) (CAS No.: 1002-53-5)	mg/kg	With reference to DIN 38407-13. Analysis was performed by GC/FPD.	0.03	---	---	---	---	n.d.
Diocetyl Tin (DOT) (CAS No.: 94410-05-6)	mg/kg	With reference to DIN 38407-13. Analysis was performed by GC/FPD.	0.03	---	---	---	---	n.d.
<b>Sum of PBBs</b>	mg/kg	With reference to IEC 62321: 2008 and performed by GC/MS.	-	n.d.	---	---	---	---
Monobromobiphenyl			5	n.d.	---	---	---	---
Dibromobiphenyl			5	n.d.	---	---	---	---
Tribromobiphenyl			5	n.d.	---	---	---	---
Tetrabromobiphenyl			5	n.d.	---	---	---	---
Pentabromobiphenyl			5	n.d.	---	---	---	---
Hexabromobiphenyl			5	n.d.	---	---	---	---
Heptabromobiphenyl			5	n.d.	---	---	---	---
Octabromobiphenyl			5	n.d.	---	---	---	---
Nonabromobiphenyl			5	n.d.	---	---	---	---
Decabromobiphenyl			5	n.d.	---	---	---	---
<b>Sum of PBDEs</b>			-	n.d.	---	---	---	---
Monobromodiphenyl ether			5	n.d.	---	---	---	---
Dibromodiphenyl ether			5	n.d.	---	---	---	---
Tribromodiphenyl ether			5	n.d.	---	---	---	---
Tetrabromodiphenyl ether			5	n.d.	---	---	---	---
Pentabromodiphenyl ether			5	n.d.	---	---	---	---
Hexabromodiphenyl ether			5	n.d.	---	---	---	---
Heptabromodiphenyl ether			5	n.d.	---	---	---	---
Octabromodiphenyl ether			5	n.d.	---	---	---	---
Nonabromodiphenyl ether	5	n.d.	---	---	---	---		
Decabromodiphenyl ether	5	n.d.	---	---	---	---		

Unless otherwise stated the results shown in this test report refer only to the sample(s) tested. This test report cannot be reproduced, except in full, without prior written permission of the Company. 除非另有說明，此報告結果僅對測試的樣品負責。本報告未經本公司書面許可，不可部份複製。  
 This document is issued by the Company subject to its General Conditions of Service printed overleaf, available on request or accessible at [www.sgs.com/terms\\_and\\_conditions.htm](http://www.sgs.com/terms_and_conditions.htm) and for electronic format documents, subject to Terms and Conditions for Electronic Documents at [www.sgs.com/terms\\_e-document.htm](http://www.sgs.com/terms_e-document.htm). Attention is drawn to the limitation of liability, indemnification and jurisdiction issues defined therein. Any holder of this document is advised that information contained hereon reflects the Company's findings at the time of its intervention only and within the limits of Client's instructions, if any. The Company's sole responsibility is to its Client and this document does not exonerate parties to a transaction from exercising all their rights and obligations under the transaction documents. This document cannot be reproduced except in full, without prior written approval of the Company. Any unauthorized alteration, forgery or falsification of the content or appearance of this document is unlawful and offenders may be prosecuted to the fullest extent of the law.

# Survey Report

No. : CS/2011/30021A Date : 2011/04/07

Page : 6 of 38

ZYWYN CORPORATION

1270, OAKMEAD PARKWAY, SUITE 201, SUNNYVALE, CA 94085, U.S.A.



Test Item(s):	Unit	Method	MDL	Result				
				No.1	No.2	No.3	No.4	No.5
<b>Asbestos</b>								
Actinolite (CAS No.: 77536-66-4)	%	With reference to NIOSH 9000 method. Analysis was performed by XRD.	1	---	---	---	---	Negative
Amosite (CAS No.: 12172-73-5)			1	---	---	---	---	Negative
Anthophyllite (CAS No.: 77536-67-5)			1	---	---	---	---	Negative
Chrysotile (CAS No.: 12001-29-5)			1	---	---	---	---	Negative
Crocidolite (CAS No.: 12001-28-4)			1	---	---	---	---	Negative
Tremolite (CAS No.: 77536-68-6)			1	---	---	---	---	Negative
<b>Phthalates</b>								
BBP (Benzyl butyl phthalate) (CAS No.: 85-68-7)	%	With reference to EN 14372. Analysis was performed by GC/MS.	0.003	---	---	---	---	n.d.
DEHP (Di- (2-ethylhexyl) phthalate) (CAS No.: 117-81-7)			0.003	---	---	---	---	n.d.
DIDP (Di-isodecyl phthalate) (CAS No.: 26761-40-0)			0.01	---	---	---	---	n.d.
DINP (Di-isononyl phthalate) (CAS No.: 28553-12-0)			0.01	---	---	---	---	n.d.
DNOP (Di-n-octyl phthalate) (CAS No.: 117-82-1)			0.003	---	---	---	---	n.d.
DBP (Dibutyl phthalate) (CAS No.: 84-74-2)			0.003	---	---	---	---	n.d.
DNHP (Di-n-hexyl phthalate) (CAS No.: 84-75-3)			0.003	---	---	---	---	n.d.

Unless otherwise stated the results shown in this test report refer only to the sample(s) tested. This test report cannot be reproduced, except in full, without prior written permission of the Company. 除非另有說明，此報告結果僅對測試的樣品負責。本報告未經本公司書面許可，不可部份複製。  
 This document is issued by the Company subject to its General Conditions of Service printed overleaf, available on request or accessible at [www.sgs.com/terms\\_and\\_conditions.htm](http://www.sgs.com/terms_and_conditions.htm) and for electronic format documents, subject to Terms and Conditions for Electronic Documents at [www.sgs.com/terms\\_e-document.htm](http://www.sgs.com/terms_e-document.htm). Attention is drawn to the limitation of liability, indemnification and jurisdiction issues defined therein. Any holder of this document is advised that information contained hereon reflects the Company's findings at the time of its intervention only and within the limits of Client's instructions, if any. The Company's sole responsibility is to its Client and this document does not exonerate parties to a transaction from exercising all their rights and obligations under the transaction documents. This document cannot be reproduced except in full, without prior written approval of the Company. Any unauthorized alteration, forgery or falsification of the content or appearance of this document is unlawful and offenders may be prosecuted to the fullest extent of the law.

# Survey Report

No. : CS/2011/30021A Date : 2011/04/07

Page : 7 of 38

ZYWYN CORPORATION

1270, OAKMEAD PARKWAY, SUITE 201, SUNNYVALE, CA 94085, U.S.A.



Test Item(s):	Unit	Method	MDL	Result				
				No.1	No.2	No.3	No.4	No.5
<b>Halons</b>								
Halon-1211 (CAS No.: 353-59-3)	mg/kg	With reference to US EPA 5021 method. Analysis was performed by GC/MS.	1	---	---	---	---	n.d.
Halon-1301 (CAS No.: 75-63-8)	mg/kg	With reference to US EPA 5021 method. Analysis was performed by GC/MS.	1	---	---	---	---	n.d.
Halon-2402 (CAS No.: 124-73-2)	mg/kg	With reference to US EPA 5021 method. Analysis was performed by GC/MS.	1	---	---	---	---	n.d.
<b>AZO</b>								
1): 4-AMINODIPHENYL (CAS No.: 92-67-1)	mg/kg	With reference to LFGB 82.02-2. Analysis was performed by GC/MS.	3	---	---	---	---	n.d.
2): BENZIDINE (CAS No.: 92-87-5)	mg/kg	With reference to LFGB 82.02-2. Analysis was performed by GC/MS.	3	---	---	---	---	n.d.
3): 4-CHLORO-O-TOLIDINE (CAS No.: 95-69-2)	mg/kg	With reference to LFGB 82.02-2. Analysis was performed by GC/MS.	3	---	---	---	---	n.d.
4): 2-NAPHTHYLAMINE (CAS No.: 91-59-8)	mg/kg	With reference to LFGB 82.02-2. Analysis was performed by GC/MS.	3	---	---	---	---	n.d.
5): O-AMINOAZOTOLUENE (CAS No.: 97-56-3)	mg/kg	With reference to LFGB 82.02-2. Analysis was performed by GC/MS.	3	---	---	---	---	n.d.
6): 2-AMINO-4-NITROTOLUENE (CAS No.: 99-55-8)	mg/kg	With reference to LFGB 82.02-2. Analysis was performed by GC/MS.	3	---	---	---	---	n.d.
7): P-CHLOROANILINE (CAS No.: 106-47-8)	mg/kg	With reference to LFGB 82.02-2. Analysis was performed by GC/MS.	3	---	---	---	---	n.d.
8): 2,4-DIAMINOANISOLE (CAS No.: 615-05-4)	mg/kg	With reference to LFGB 82.02-2. Analysis was performed by GC/MS.	3	---	---	---	---	n.d.

Unless otherwise stated the results shown in this test report refer only to the sample(s) tested. This test report cannot be reproduced, except in full, without prior written permission of the Company. 除非另有說明，此報告結果僅對測試的樣品負責。本報告未經本公司書面許可，不可部份複製。

This document is issued by the Company subject to its General Conditions of Service printed overleaf, available on request or accessible at [www.sgs.com/terms\\_and\\_conditions.htm](http://www.sgs.com/terms_and_conditions.htm) and for electronic format documents, subject to Terms and Conditions for Electronic Documents at [www.sgs.com/terms\\_e-document.htm](http://www.sgs.com/terms_e-document.htm). Attention is drawn to the limitation of liability, indemnification and jurisdiction issues defined therein. Any holder of this document is advised that information contained hereon reflects the Company's findings at the time of its intervention only and within the limits of Client's instructions, if any. The Company's sole responsibility is to its Client and this document does not exonerate parties to a transaction from exercising all their rights and obligations under the transaction documents. This document cannot be reproduced except in full, without prior written approval of the Company. Any unauthorized alteration, forgery or falsification of the content or appearance of this document is unlawful and offenders may be prosecuted to the fullest extent of the law.

# Survey Report

No. : CS/2011/30021A Date : 2011/04/07

Page : 8 of 38

ZYWYN CORPORATION

1270, OAKMEAD PARKWAY, SUITE 201, SUNNYVALE, CA 94085, U.S.A.



Test Item(s):	Unit	Method	MDL	Result				
				No.1	No.2	No.3	No.4	No.5
9): 4,4'-DIAMINODIPHENYLMETHANE (CAS No.: 101-77-9)	mg/kg	With reference to LFGB 82.02-2. Analysis was performed by GC/MS.	3	---	---	---	---	n.d.
10): 3,3'-DICHLOROBENZIDINE (CAS No.: 91-94-1)	mg/kg	With reference to LFGB 82.02-2. Analysis was performed by GC/MS.	3	---	---	---	---	n.d.
11): 3,3'-DIMETHOXYBENZIDINE (CAS No.: 119-90-4)	mg/kg	With reference to LFGB 82.02-2. Analysis was performed by GC/MS.	3	---	---	---	---	n.d.
12): 3,3'-DIMETHYLBENZIDINE (CAS No.: 119-93-7)	mg/kg	With reference to LFGB 82.02-2. Analysis was performed by GC/MS.	3	---	---	---	---	n.d.
13): 3,3'-DIMETHYL-4,4'-DIAMINODIPHENYLMETHANE (CAS No.: 838-88-0)	mg/kg	With reference to LFGB 82.02-2. Analysis was performed by GC/MS.	3	---	---	---	---	n.d.
14): P-CRESIDINE (2-METHOXY-5-METHYLANILINE) (CAS No.: 120-71-8)	mg/kg	With reference to LFGB 82.02-2. Analysis was performed by GC/MS.	3	---	---	---	---	n.d.
15): 4,4'-METHYLENE-BIS-(2-CHLOROANILINE) (CAS No.: 101-14-4)	mg/kg	With reference to LFGB 82.02-2. Analysis was performed by GC/MS.	3	---	---	---	---	n.d.
16): 4,4'-OXYDIANILINE (CAS No.: 101-80-4)	mg/kg	With reference to LFGB 82.02-2. Analysis was performed by GC/MS.	3	---	---	---	---	n.d.
17): 4,4'-THIODIANILINE (CAS No.: 139-65-1)	mg/kg	With reference to LFGB 82.02-2. Analysis was performed by GC/MS.	3	---	---	---	---	n.d.
18): O-TOLUIDINE (CAS No.: 95-53-4)	mg/kg	With reference to LFGB 82.02-2. Analysis was performed by GC/MS.	3	---	---	---	---	n.d.
19): 2,4-TOLUYLENEDIAMINE (CAS No.: 95-80-7)	mg/kg	With reference to LFGB 82.02-2. Analysis was performed by GC/MS.	3	---	---	---	---	n.d.

Unless otherwise stated the results shown in this test report refer only to the sample(s) tested. This test report cannot be reproduced, except in full, without prior written permission of the Company. 除非另有說明，此報告結果僅對測試的樣品負責。本報告未經本公司書面許可，不可部份複製。

This document is issued by the Company subject to its General Conditions of Service printed overleaf, available on request or accessible at [www.sgs.com/terms\\_and\\_conditions.htm](http://www.sgs.com/terms_and_conditions.htm) and for electronic format documents, subject to Terms and Conditions for Electronic Documents at [www.sgs.com/terms\\_e-document.htm](http://www.sgs.com/terms_e-document.htm). Attention is drawn to the limitation of liability, indemnification and jurisdiction issues defined therein. Any holder of this document is advised that information contained hereon reflects the Company's findings at the time of its intervention only and within the limits of Client's instructions, if any. The Company's sole responsibility is to its Client and this document does not exonerate parties to a transaction from exercising all their rights and obligations under the transaction documents. This document cannot be reproduced except in full, without prior written approval of the Company. Any unauthorized alteration, forgery or falsification of the content or appearance of this document is unlawful and offenders may be prosecuted to the fullest extent of the law.

SGS Taiwan Ltd.

台灣檢驗科技股份有限公司 Chemical-Taipei 33 WuChyuan Road, Wuku Industrial Zone, New Taipei City, Taiwan / 新北市五股工業區五權路33號 + 886 (02)2299 3279 f + 886 (02)2299 3237 [www.sgs.com](http://www.sgs.com)

# Survey Report

No. : CS/2011/30021A Date : 2011/04/07

Page : 9 of 38

ZYWYN CORPORATION

1270, OAKMEAD PARKWAY, SUITE 201, SUNNYVALE, CA 94085, U.S.A.



Test Item(s):	Unit	Method	MDL	Result				
				No.1	No.2	No.3	No.4	No.5
20): 2,4,5-TRIMETHYLANILINE (CAS No.: 137-17-7)	mg/kg	With reference to LFGB 82.02-2. Analysis was performed by GC/MS.	3	---	---	---	---	n.d.
21): O-ANISIDINE (CAS No.: 90-04-0)	mg/kg	With reference to LFGB 82.02-2. Analysis was performed by GC/MS.	3	---	---	---	---	n.d.
22): P-AMINOAZOBENZENE (CAS No.: 60-09-3)	mg/kg	With reference to LFGB 82.02-2. Analysis was performed by GC/MS.	3	---	---	---	---	n.d.
23): 2,4-XYLIDINE (CAS No.: 95-68-1)	mg/kg	With reference to LFGB 82.02-2. Analysis was performed by GC/MS.	3	---	---	---	---	n.d.
24): 2,6-XYLIDINE (CAS No.: 87-62-7)	mg/kg	With reference to LFGB 82.02-2. Analysis was performed by GC/MS.	3	---	---	---	---	n.d.
<b>HFCs (Hydrofluorocarbon)</b>								
HFC-23 (CHF3) (CAS No.: 75-46-7)	mg/kg	With reference to US EPA 5021 method. Analysis was performed by GC/MS.	1	---	---	---	---	n.d.
HFC-32 (CH2F2) (CAS No.: 75-10-5)	mg/kg	With reference to US EPA 5021 method. Analysis was performed by GC/MS.	1	---	---	---	---	n.d.
HFC-41 (CH3F) (CAS No.: 593-53-3)	mg/kg	With reference to US EPA 5021 method. Analysis was performed by GC/MS.	1	---	---	---	---	n.d.
HFC-43-10mee (C5H2F10)	mg/kg	With reference to US EPA 5021 method. Analysis was performed by GC/MS.	1	---	---	---	---	n.d.
HFC-125 (C2HF5)	mg/kg	With reference to US EPA 5021 method. Analysis was performed by GC/MS.	1	---	---	---	---	n.d.
HFC-134 (C2H2F4)	mg/kg	With reference to US EPA 5021 method. Analysis was performed by GC/MS.	1	---	---	---	---	n.d.
HFC-134a (CH2FCF3) (CAS No.: 811-97-2)	mg/kg	With reference to US EPA 5021 method. Analysis was performed by GC/MS.	1	---	---	---	---	n.d.

Unless otherwise stated the results shown in this test report refer only to the sample(s) tested. This test report cannot be reproduced, except in full, without prior written permission of the Company. 除非另有說明，此報告結果僅對測試的樣品負責。本報告未經本公司書面許可，不可部份複製。

This document is issued by the Company subject to its General Conditions of Service printed overleaf, available on request or accessible at [www.sgs.com/terms\\_and\\_conditions.htm](http://www.sgs.com/terms_and_conditions.htm) and for electronic format documents, subject to Terms and Conditions for Electronic Documents at [www.sgs.com/terms\\_e-document.htm](http://www.sgs.com/terms_e-document.htm). Attention is drawn to the limitation of liability, indemnification and jurisdiction issues defined therein. Any holder of this document is advised that information contained hereon reflects the Company's findings at the time of its intervention only and within the limits of Client's instructions, if any. The Company's sole responsibility is to its Client and this document does not exonerate parties to a transaction from exercising all their rights and obligations under the transaction documents. This document cannot be reproduced except in full, without prior written approval of the Company. Any unauthorized alteration, forgery or falsification of the content or appearance of this document is unlawful and offenders may be prosecuted to the fullest extent of the law.

# Survey Report

No. : CS/2011/30021A Date : 2011/04/07

Page : 10 of 38

ZYWYN CORPORATION

1270, OAKMEAD PARKWAY, SUITE 201, SUNNYVALE, CA 94085, U.S.A.



Test Item(s):	Unit	Method	MDL	Result				
				No.1	No.2	No.3	No.4	No.5
HFC-143 (CH3F3)	mg/kg	With reference to US EPA 5021 method. Analysis was performed by GC/MS.	1	---	---	---	---	n.d.
HFC-143a (CH3F3)	mg/kg	With reference to US EPA 5021 method. Analysis was performed by GC/MS.	1	---	---	---	---	n.d.
HFC-152a (C2H4F2) (CAS No.: 75-37-6)	mg/kg	With reference to US EPA 5021 method. Analysis was performed by GC/MS.	1	---	---	---	---	n.d.
HFC-227ea (C3HF7) (CAS No.: 431-89-0)	mg/kg	With reference to US EPA 5021 method. Analysis was performed by GC/MS.	1	---	---	---	---	n.d.
HFC-236fa (C3H2F6)	mg/kg	With reference to US EPA 5021 method. Analysis was performed by GC/MS.	1	---	---	---	---	n.d.
HFC-236ea (C3H2F6) (CAS No.: 431-63-0)	mg/kg	With reference to US EPA 5021 method. Analysis was performed by GC/MS.	1	---	---	---	---	n.d.
HFC-245ca (C3H3F5)	mg/kg	With reference to US EPA 5021 method. Analysis was performed by GC/MS.	1	---	---	---	---	n.d.
HFC-245fa (C3H3F5)	mg/kg	With reference to US EPA 5021 method. Analysis was performed by GC/MS.	1	---	---	---	---	n.d.
HFC-365mfc (C4H5F5)	mg/kg	With reference to US EPA 5021 method. Analysis was performed by GC/MS.	1	---	---	---	---	n.d.
<b>PFCs (Perfluorocarbon)</b>								
F14 (CAS No.: 75-73-0)	mg/kg	With reference to US EPA 5021 method. Analysis was performed by GC/MS.	1	---	---	---	---	n.d.
Fluorocarbon 116 (CAS No.: 76-16-4)	mg/kg	With reference to US EPA 5021 method. Analysis was performed by GC/MS.	1	---	---	---	---	n.d.
Freon 218 (CAS No.: 76-19-7)	mg/kg	With reference to US EPA 5021 method. Analysis was performed by GC/MS.	1	---	---	---	---	n.d.

Unless otherwise stated the results shown in this test report refer only to the sample(s) tested. This test report cannot be reproduced, except in full, without prior written permission of the Company. 除非另有說明，此報告結果僅對測試的樣品負責。本報告未經本公司書面許可，不可部份複製。  
 This document is issued by the Company subject to its General Conditions of Service printed overleaf, available on request or accessible at [www.sgs.com/terms\\_and\\_conditions.htm](http://www.sgs.com/terms_and_conditions.htm) and for electronic format documents, subject to Terms and Conditions for Electronic Documents at [www.sgs.com/terms\\_e-document.htm](http://www.sgs.com/terms_e-document.htm). Attention is drawn to the limitation of liability, indemnification and jurisdiction issues defined therein. Any holder of this document is advised that information contained hereon reflects the Company's findings at the time of its intervention only and within the limits of Client's instructions, if any. The Company's sole responsibility is to its Client and this document does not exonerate parties to a transaction from exercising all their rights and obligations under the transaction documents. This document cannot be reproduced except in full, without prior written approval of the Company. Any unauthorized alteration, forgery or falsification of the content or appearance of this document is unlawful and offenders may be prosecuted to the fullest extent of the law.

# Survey Report

No. : CS/2011/30021A Date : 2011/04/07

Page : 11 of 38

ZYWYN CORPORATION

1270, OAKMEAD PARKWAY, SUITE 201, SUNNYVALE, CA 94085, U.S.A.



Test Item(s):	Unit	Method	MDL	Result				
				No.1	No.2	No.3	No.4	No.5
Decafluorobutane (CAS No.: 355-25-9)	mg/kg	With reference to US EPA 5021 method. Analysis was performed by GC/MS.	1	---	---	---	---	n.d.
Freon C318 (CAS No.: 115-25-3)	mg/kg	With reference to US EPA 5021 method. Analysis was performed by GC/MS.	1	---	---	---	---	n.d.
Perfluor-1-butene (CAS No.: 357-26-6)	mg/kg	With reference to US EPA 5021 method. Analysis was performed by GC/MS.	1	---	---	---	---	n.d.
perfluorisobutene (CAS No.: 382-21-8)	mg/kg	With reference to US EPA 5021 method. Analysis was performed by GC/MS.	1	---	---	---	---	n.d.
1,4-dihydrooctafluorobutane (CAS No.: 377-36-6)	mg/kg	With reference to US EPA 5021 method. Analysis was performed by GC/MS.	1	---	---	---	---	n.d.
Nonafluor-2-(trifluoromethyl) butane (CAS No.: 594-91-2)	mg/kg	With reference to US EPA 5021 method. Analysis was performed by GC/MS.	1	---	---	---	---	n.d.
Perfluoro-n-pentane (CAS No.: 678-26-2)	mg/kg	With reference to US EPA 5021 method. Analysis was performed by GC/MS.	1	---	---	---	---	n.d.
2-perfluoromethylpentane (CAS No.: 355-04-4)	mg/kg	With reference to US EPA 5021 method. Analysis was performed by GC/MS.	1	---	---	---	---	n.d.
Perfluorohexane (CAS No.: 355-42-0)	mg/kg	With reference to US EPA 5021 method. Analysis was performed by GC/MS.	1	---	---	---	---	n.d.
<b>CFC's (Chlorofluorocarbons)</b>								
Group I								
Chlorofluorocarbon-11 (CAS No.: 75-69-4)	mg/kg	With reference to US EPA 5021 method. Analysis was performed by GC/MS.	1	---	---	---	---	n.d.
Chlorofluorocarbon-12 (CAS No.: 75-71-8)	mg/kg	With reference to US EPA 5021 method. Analysis was performed by GC/MS.	1	---	---	---	---	n.d.

Unless otherwise stated the results shown in this test report refer only to the sample(s) tested. This test report cannot be reproduced, except in full, without prior written permission of the Company. 除非另有說明，此報告結果僅對測試的樣品負責。本報告未經本公司書面許可，不可部份複製。

This document is issued by the Company subject to its General Conditions of Service printed overleaf, available on request or accessible at [www.sgs.com/terms\\_and\\_conditions.htm](http://www.sgs.com/terms_and_conditions.htm) and for electronic format documents, subject to Terms and Conditions for Electronic Documents at [www.sgs.com/terms\\_e-document.htm](http://www.sgs.com/terms_e-document.htm). Attention is drawn to the limitation of liability, indemnification and jurisdiction issues defined therein. Any holder of this document is advised that information contained hereon reflects the Company's findings at the time of its intervention only and within the limits of Client's instructions, if any. The Company's sole responsibility is to its Client and this document does not exonerate parties to a transaction from exercising all their rights and obligations under the transaction documents. This document cannot be reproduced except in full, without prior written approval of the Company. Any unauthorized alteration, forgery or falsification of the content or appearance of this document is unlawful and offenders may be prosecuted to the fullest extent of the law.

# Survey Report

No. : CS/2011/30021A Date : 2011/04/07

Page : 12 of 38

ZYWYN CORPORATION

1270, OAKMEAD PARKWAY, SUITE 201, SUNNYVALE, CA 94085, U.S.A.



Test Item(s):	Unit	Method	MDL	Result				
				No.1	No.2	No.3	No.4	No.5
Chlorofluorocarbon-113 (CAS No.: 76-13-1)	mg/kg	With reference to US EPA 5021 method. Analysis was performed by GC/MS.	1	---	---	---	---	n.d.
Chlorofluorocarbon-114 (CAS No.: 76-14-2)	mg/kg	With reference to US EPA 5021 method. Analysis was performed by GC/MS.	1	---	---	---	---	n.d.
Chlorofluorocarbon-115 (CAS No.: 76-15-3)	mg/kg	With reference to US EPA 5021 method. Analysis was performed by GC/MS.	1	---	---	---	---	n.d.
Group III								
Chlorofluorocarbon-13 (CAS No.: 75-72-9)	mg/kg	With reference to US EPA 5021 method. Analysis was performed by GC/MS.	1	---	---	---	---	n.d.
Chlorofluorocarbon-111 (CAS No.: 354-56-3)	mg/kg	With reference to US EPA 5021 method. Analysis was performed by GC/MS.	1	---	---	---	---	n.d.
Chlorofluorocarbon-112 (CAS No.: 76-12-0)	mg/kg	With reference to US EPA 5021 method. Analysis was performed by GC/MS.	1	---	---	---	---	n.d.
Chlorofluorocarbon-211 (CAS No.: 422-78-6)	mg/kg	With reference to US EPA 5021 method. Analysis was performed by GC/MS.	1	---	---	---	---	n.d.
Chlorofluorocarbon-212 (CAS No.: 3182-26-1)	mg/kg	With reference to US EPA 5021 method. Analysis was performed by GC/MS.	1	---	---	---	---	n.d.
Chlorofluorocarbon-213 (CAS No.: 2354-06-5)	mg/kg	With reference to US EPA 5021 method. Analysis was performed by GC/MS.	1	---	---	---	---	n.d.
Chlorofluorocarbon-214 (CAS No.: 29255-31-0)	mg/kg	With reference to US EPA 5021 method. Analysis was performed by GC/MS.	1	---	---	---	---	n.d.
Chlorofluorocarbon-215 (CAS No.: 4259-43-2)	mg/kg	With reference to US EPA 5021 method. Analysis was performed by GC/MS.	1	---	---	---	---	n.d.
Chlorofluorocarbon-216 (CAS No.: 661-97-2)	mg/kg	With reference to US EPA 5021 method. Analysis was performed by GC/MS.	1	---	---	---	---	n.d.

Unless otherwise stated the results shown in this test report refer only to the sample(s) tested. This test report cannot be reproduced, except in full, without prior written permission of the Company. 除非另有說明，此報告結果僅對測試的樣品負責。本報告未經本公司書面許可，不可部份複製。

This document is issued by the Company subject to its General Conditions of Service printed overleaf, available on request or accessible at [www.sgs.com/terms\\_and\\_conditions.htm](http://www.sgs.com/terms_and_conditions.htm) and for electronic format documents, subject to Terms and Conditions for Electronic Documents at [www.sgs.com/terms\\_e-document.htm](http://www.sgs.com/terms_e-document.htm). Attention is drawn to the limitation of liability, indemnification and jurisdiction issues defined therein. Any holder of this document is advised that information contained hereon reflects the Company's findings at the time of its intervention only and within the limits of Client's instructions, if any. The Company's sole responsibility is to its Client and this document does not exonerate parties to a transaction from exercising all their rights and obligations under the transaction documents. This document cannot be reproduced except in full, without prior written approval of the Company. Any unauthorized alteration, forgery or falsification of the content or appearance of this document is unlawful and offenders may be prosecuted to the fullest extent of the law.

# Survey Report

No. : CS/2011/30021A Date : 2011/04/07

Page : 13 of 38

ZYWYN CORPORATION

1270, OAKMEAD PARKWAY, SUITE 201, SUNNYVALE, CA 94085, U.S.A.



Test Item(s):	Unit	Method	MDL	Result				
				No.1	No.2	No.3	No.4	No.5
Chlorofluorocarbon-217 (CAS No.: 422-86-6)	mg/kg	With reference to US EPA 5021 method. Analysis was performed by GC/MS.	1	---	---	---	---	n.d.
<b>HCFCs (Hydrochlorofluorocarbons)</b>								
HCFC-21 (CAS No.: 75-43-4)	mg/kg	With reference to US EPA 5021 method. Analysis was performed by GC/MS.	1	---	---	---	---	n.d.
HCFC-22 (CAS No.: 75-45-6)	mg/kg	With reference to US EPA 5021 method. Analysis was performed by GC/MS.	1	---	---	---	---	n.d.
HCFC-31 (CAS No.: 593-70-4)	mg/kg	With reference to US EPA 5021 method. Analysis was performed by GC/MS.	1	---	---	---	---	n.d.
HCFC-121 (CAS No.: 354-14-3)	mg/kg	With reference to US EPA 5021 method. Analysis was performed by GC/MS.	1	---	---	---	---	n.d.
HCFC-122 (CAS No.: 354-21-2)	mg/kg	With reference to US EPA 5021 method. Analysis was performed by GC/MS.	1	---	---	---	---	n.d.
HCFC-123 (CAS No.: 306-83-2)	mg/kg	With reference to US EPA 5021 method. Analysis was performed by GC/MS.	1	---	---	---	---	n.d.
HCFC-124 (CAS No.: 2837-89-0)	mg/kg	With reference to US EPA 5021 method. Analysis was performed by GC/MS.	1	---	---	---	---	n.d.
HCFC-131 (CAS No.: 359-28-4)	mg/kg	With reference to US EPA 5021 method. Analysis was performed by GC/MS.	1	---	---	---	---	n.d.
HCFC-132b (CAS No.: 1649-08-7)	mg/kg	With reference to US EPA 5021 method. Analysis was performed by GC/MS.	1	---	---	---	---	n.d.

Unless otherwise stated the results shown in this test report refer only to the sample(s) tested. This test report cannot be reproduced, except in full, without prior written permission of the Company. 除非另有說明，此報告結果僅對測試的樣品負責。本報告未經本公司書面許可，不可部份複製。

This document is issued by the Company subject to its General Conditions of Service printed overleaf, available on request or accessible at [www.sgs.com/terms\\_and\\_conditions.htm](http://www.sgs.com/terms_and_conditions.htm) and for electronic format documents, subject to Terms and Conditions for Electronic Documents at [www.sgs.com/terms\\_e-document.htm](http://www.sgs.com/terms_e-document.htm). Attention is drawn to the limitation of liability, indemnification and jurisdiction issues defined therein. Any holder of this document is advised that information contained hereon reflects the Company's findings at the time of its intervention only and within the limits of Client's instructions, if any. The Company's sole responsibility is to its Client and this document does not exonerate parties to a transaction from exercising all their rights and obligations under the transaction documents. This document cannot be reproduced except in full, without prior written approval of the Company. Any unauthorized alteration, forgery or falsification of the content or appearance of this document is unlawful and offenders may be prosecuted to the fullest extent of the law.

# Survey Report

No. : CS/2011/30021A Date : 2011/04/07

Page : 14 of 38

ZYWYN CORPORATION

1270, OAKMEAD PARKWAY, SUITE 201, SUNNYVALE, CA 94085, U.S.A.



Test Item(s):	Unit	Method	MDL	Result				
				No.1	No.2	No.3	No.4	No.5
HCFC-133a (CAS No.: 75-88-7)	mg/kg	With reference to US EPA 5021 method. Analysis was performed by GC/MS.	1	---	---	---	---	n.d.
HCFC-141b (CAS No.: 1717-00-6)	mg/kg	With reference to US EPA 5021 method. Analysis was performed by GC/MS.	1	---	---	---	---	n.d.
HCFC-142b (CAS No.: 75-68-3)	mg/kg	With reference to US EPA 5021 method. Analysis was performed by GC/MS.	1	---	---	---	---	n.d.
HCFC-221 (CAS No.: 422-26-4)	mg/kg	With reference to US EPA 5021 method. Analysis was performed by GC/MS.	1	---	---	---	---	n.d.
HCFC-222 (CAS No.: 422-49-1)	mg/kg	With reference to US EPA 5021 method. Analysis was performed by GC/MS.	1	---	---	---	---	n.d.
HCFC-223 (CAS No.: 422-52-6)	mg/kg	With reference to US EPA 5021 method. Analysis was performed by GC/MS.	1	---	---	---	---	n.d.
HCFC-224 (CAS No.: 422-54-8)	mg/kg	With reference to US EPA 5021 method. Analysis was performed by GC/MS.	1	---	---	---	---	n.d.
HCFC-225ca (CAS No.: 422-56-0)	mg/kg	With reference to US EPA 5021 method. Analysis was performed by GC/MS.	1	---	---	---	---	n.d.
HCFC-225cb (CAS No.: 507-55-1)	mg/kg	With reference to US EPA 5021 method. Analysis was performed by GC/MS.	1	---	---	---	---	n.d.
HCFC-226 (CAS No.: 431-87-8)	mg/kg	With reference to US EPA 5021 method. Analysis was performed by GC/MS.	1	---	---	---	---	n.d.
HCFC-231 (CAS No.: 421-94-3)	mg/kg	With reference to US EPA 5021 method. Analysis was performed by GC/MS.	1	---	---	---	---	n.d.
HCFC-232 (CAS No.: 460-89-9)	mg/kg	With reference to US EPA 5021 method. Analysis was performed by GC/MS.	1	---	---	---	---	n.d.

Unless otherwise stated the results shown in this test report refer only to the sample(s) tested. This test report cannot be reproduced, except in full, without prior written permission of the Company. 除非另有說明，此報告結果僅對測試的樣品負責。本報告未經本公司書面許可，不可部份複製。

This document is issued by the Company subject to its General Conditions of Service printed overleaf, available on request or accessible at [www.sgs.com/terms\\_and\\_conditions.htm](http://www.sgs.com/terms_and_conditions.htm) and for electronic format documents, subject to Terms and Conditions for Electronic Documents at [www.sgs.com/terms\\_e-document.htm](http://www.sgs.com/terms_e-document.htm). Attention is drawn to the limitation of liability, indemnification and jurisdiction issues defined therein. Any holder of this document is advised that information contained hereon reflects the Company's findings at the time of its intervention only and within the limits of Client's instructions, if any. The Company's sole responsibility is to its Client and this document does not exonerate parties to a transaction from exercising all their rights and obligations under the transaction documents. This document cannot be reproduced except in full, without prior written approval of the Company. Any unauthorized alteration, forgery or falsification of the content or appearance of this document is unlawful and offenders may be prosecuted to the fullest extent of the law.

# Survey Report

No. : CS/2011/30021A Date : 2011/04/07

Page : 15 of 38

ZYWYN CORPORATION

1270, OAKMEAD PARKWAY, SUITE 201, SUNNYVALE, CA 94085, U.S.A.



Test Item(s):	Unit	Method	MDL	Result				
				No.1	No.2	No.3	No.4	No.5
HCFC-233 (CAS No.: 7125-84-0)	mg/kg	With reference to US EPA 5021 method. Analysis was performed by GC/MS.	1	---	---	---	---	n.d.
HCFC-234 (CAS No.: 425-94-5)	mg/kg	With reference to US EPA 5021 method. Analysis was performed by GC/MS.	1	---	---	---	---	n.d.
HCFC-235 (CAS No.: 460-92-4)	mg/kg	With reference to US EPA 5021 method. Analysis was performed by GC/MS.	1	---	---	---	---	n.d.
HCFC-241 (CAS No.: 666-27-3)	mg/kg	With reference to US EPA 5021 method. Analysis was performed by GC/MS.	1	---	---	---	---	n.d.
HCFC-242 (CAS No.: 460-63-9)	mg/kg	With reference to US EPA 5021 method. Analysis was performed by GC/MS.	1	---	---	---	---	n.d.
HCFC-243 (CAS No.: 460-69-5)	mg/kg	With reference to US EPA 5021 method. Analysis was performed by GC/MS.	1	---	---	---	---	n.d.
HCFC-244	mg/kg	With reference to US EPA 5021 method. Analysis was performed by GC/MS.	1	---	---	---	---	n.d.
HCFC-251 (CAS No.: 421-41-0)	mg/kg	With reference to US EPA 5021 method. Analysis was performed by GC/MS.	1	---	---	---	---	n.d.
HCFC-252 (CAS No.: 819-00-1)	mg/kg	With reference to US EPA 5021 method. Analysis was performed by GC/MS.	1	---	---	---	---	n.d.
HCFC-253 (CAS No.: 460-35-5)	mg/kg	With reference to US EPA 5021 method. Analysis was performed by GC/MS.	1	---	---	---	---	n.d.
HCFC-261 (CAS No.: 420-97-3)	mg/kg	With reference to US EPA 5021 method. Analysis was performed by GC/MS.	1	---	---	---	---	n.d.
HCFC-262 (CAS No.: 421-02-03)	mg/kg	With reference to US EPA 5021 method. Analysis was performed by GC/MS.	1	---	---	---	---	n.d.

Unless otherwise stated the results shown in this test report refer only to the sample(s) tested. This test report cannot be reproduced, except in full, without prior written permission of the Company. 除非另有說明，此報告結果僅對測試的樣品負責。本報告未經本公司書面許可，不可部份複製。

This document is issued by the Company subject to its General Conditions of Service printed overleaf, available on request or accessible at [www.sgs.com/terms\\_and\\_conditions.htm](http://www.sgs.com/terms_and_conditions.htm) and for electronic format documents, subject to Terms and Conditions for Electronic Documents at [www.sgs.com/terms\\_e-document.htm](http://www.sgs.com/terms_e-document.htm). Attention is drawn to the limitation of liability, indemnification and jurisdiction issues defined therein. Any holder of this document is advised that information contained hereon reflects the Company's findings at the time of its intervention only and within the limits of Client's instructions, if any. The Company's sole responsibility is to its Client and this document does not exonerate parties to a transaction from exercising all their rights and obligations under the transaction documents. This document cannot be reproduced except in full, without prior written approval of the Company. Any unauthorized alteration, forgery or falsification of the content or appearance of this document is unlawful and offenders may be prosecuted to the fullest extent of the law.

# Survey Report

No. : CS/2011/30021A Date : 2011/04/07

Page : 16 of 38

ZYWYN CORPORATION

1270, OAKMEAD PARKWAY, SUITE 201, SUNNYVALE, CA 94085, U.S.A.



Test Item(s):	Unit	Method	MDL	Result				
				No.1	No.2	No.3	No.4	No.5
HCFC-271 (CAS No.: 430-55-7)	mg/kg	With reference to US EPA 5021 method. Analysis was performed by GC/MS.	1	---	---	---	---	n.d.
<b>HBFCs (Hydrobromofluorocarbons)</b>								
HBFC-21B2 (CHFBr <sub>2</sub> ) (CAS No.: 1868-53-7)	mg/kg	With reference to US EPA 5021 method. Analysis was performed by GC/MS.	1	---	---	---	---	n.d.
HBFC-22B1 (CHF <sub>2</sub> Br) (CAS No.: 1511-62-2)	mg/kg	With reference to US EPA 5021 method. Analysis was performed by GC/MS.	1	---	---	---	---	n.d.
HBFC-31B1 (CH <sub>2</sub> FBr) (CAS No.: 373-52-4)	mg/kg	With reference to US EPA 5021 method. Analysis was performed by GC/MS.	1	---	---	---	---	n.d.
HBFC-121B4 (C <sub>2</sub> HFBr <sub>4</sub> )	mg/kg	With reference to US EPA 5021 method. Analysis was performed by GC/MS.	1	---	---	---	---	n.d.
HBFC-122B3 (C <sub>2</sub> HF <sub>2</sub> Br <sub>3</sub> )	mg/kg	With reference to US EPA 5021 method. Analysis was performed by GC/MS.	1	---	---	---	---	n.d.
HBFC-123B2 (C <sub>2</sub> HF <sub>3</sub> Br <sub>2</sub> )	mg/kg	With reference to US EPA 5021 method. Analysis was performed by GC/MS.	1	---	---	---	---	n.d.
HBFC-124B1 (C <sub>2</sub> HF <sub>4</sub> Br)	mg/kg	With reference to US EPA 5021 method. Analysis was performed by GC/MS.	1	---	---	---	---	n.d.
HBFC-131B3 (C <sub>2</sub> H <sub>2</sub> FBr <sub>3</sub> )	mg/kg	With reference to US EPA 5021 method. Analysis was performed by GC/MS.	1	---	---	---	---	n.d.
HBFC-132B2 (C <sub>2</sub> H <sub>2</sub> F <sub>2</sub> Br <sub>2</sub> )	mg/kg	With reference to US EPA 5021 method. Analysis was performed by GC/MS.	1	---	---	---	---	n.d.

Unless otherwise stated the results shown in this test report refer only to the sample(s) tested. This test report cannot be reproduced, except in full, without prior written permission of the Company. 除非另有說明，此報告結果僅對測試的樣品負責。本報告未經本公司書面許可，不可部份複製。

This document is issued by the Company subject to its General Conditions of Service printed overleaf, available on request or accessible at [www.sgs.com/terms\\_and\\_conditions.htm](http://www.sgs.com/terms_and_conditions.htm) and for electronic format documents, subject to Terms and Conditions for Electronic Documents at [www.sgs.com/terms\\_e-document.htm](http://www.sgs.com/terms_e-document.htm). Attention is drawn to the limitation of liability, indemnification and jurisdiction issues defined therein. Any holder of this document is advised that information contained hereon reflects the Company's findings at the time of its intervention only and within the limits of Client's instructions, if any. The Company's sole responsibility is to its Client and this document does not exonerate parties to a transaction from exercising all their rights and obligations under the transaction documents. This document cannot be reproduced except in full, without prior written approval of the Company. Any unauthorized alteration, forgery or falsification of the content or appearance of this document is unlawful and offenders may be prosecuted to the fullest extent of the law.

# Survey Report

No. : CS/2011/30021A Date : 2011/04/07

Page : 17 of 38

ZYWYN CORPORATION

1270, OAKMEAD PARKWAY, SUITE 201, SUNNYVALE, CA 94085, U.S.A.



Test Item(s):	Unit	Method	MDL	Result				
				No.1	No.2	No.3	No.4	No.5
HBFC-133B1 (C2H2F3Br)	mg/kg	With reference to US EPA 5021 method. Analysis was performed by GC/MS.	1	---	---	---	---	n.d.
HBFC-141B2 (C2H3FBr2)	mg/kg	With reference to US EPA 5021 method. Analysis was performed by GC/MS.	1	---	---	---	---	n.d.
HBFC-142B1 (C2H3F2Br)	mg/kg	With reference to US EPA 5021 method. Analysis was performed by GC/MS.	1	---	---	---	---	n.d.
HBFC-151B1 (C2H4FBr)	mg/kg	With reference to US EPA 5021 method. Analysis was performed by GC/MS.	1	---	---	---	---	n.d.
HBFC-221B6 (C3HFBr6)	mg/kg	With reference to US EPA 5021 method. Analysis was performed by GC/MS.	1	---	---	---	---	n.d.
HBFC-222B5 (C3HF2Br5)	mg/kg	With reference to US EPA 5021 method. Analysis was performed by GC/MS.	1	---	---	---	---	n.d.
HBFC-223B4 (C3HF3Br4)	mg/kg	With reference to US EPA 5021 method. Analysis was performed by GC/MS.	1	---	---	---	---	n.d.
HBFC-224B3 (C3HF4Br3)	mg/kg	With reference to US EPA 5021 method. Analysis was performed by GC/MS.	1	---	---	---	---	n.d.
HBFC-225B2 (C3HF5Br2)	mg/kg	With reference to US EPA 5021 method. Analysis was performed by GC/MS.	1	---	---	---	---	n.d.
HBFC-226B1 (C3HF6Br)	mg/kg	With reference to US EPA 5021 method. Analysis was performed by GC/MS.	1	---	---	---	---	n.d.
HBFC-231B5 (C3H2FBr5)	mg/kg	With reference to US EPA 5021 method. Analysis was performed by GC/MS.	1	---	---	---	---	n.d.
HBFC-232B4 (C3H2F2Br4)	mg/kg	With reference to US EPA 5021 method. Analysis was performed by GC/MS.	1	---	---	---	---	n.d.

Unless otherwise stated the results shown in this test report refer only to the sample(s) tested. This test report cannot be reproduced, except in full, without prior written permission of the Company. 除非另有說明，此報告結果僅對測試的樣品負責。本報告未經本公司書面許可，不可部份複製。  
 This document is issued by the Company subject to its General Conditions of Service printed overleaf, available on request or accessible at [www.sgs.com/terms\\_and\\_conditions.htm](http://www.sgs.com/terms_and_conditions.htm) and for electronic format documents, subject to Terms and Conditions for Electronic Documents at [www.sgs.com/terms\\_e-document.htm](http://www.sgs.com/terms_e-document.htm). Attention is drawn to the limitation of liability, indemnification and jurisdiction issues defined therein. Any holder of this document is advised that information contained hereon reflects the Company's findings at the time of its intervention only and within the limits of Client's instructions, if any. The Company's sole responsibility is to its Client and this document does not exonerate parties to a transaction from exercising all their rights and obligations under the transaction documents. This document cannot be reproduced except in full, without prior written approval of the Company. Any unauthorized alteration, forgery or falsification of the content or appearance of this document is unlawful and offenders may be prosecuted to the fullest extent of the law.

# Survey Report

No. : CS/2011/30021A Date : 2011/04/07

Page : 18 of 38

ZYWYN CORPORATION

1270, OAKMEAD PARKWAY, SUITE 201, SUNNYVALE, CA 94085, U.S.A.



Test Item(s):	Unit	Method	MDL	Result				
				No.1	No.2	No.3	No.4	No.5
HBFC-233B3 (C3H2F3Br3)	mg/kg	With reference to US EPA 5021 method. Analysis was performed by GC/MS.	1	---	---	---	---	n.d.
HBFC-234B2 (C3H2F4Br2)	mg/kg	With reference to US EPA 5021 method. Analysis was performed by GC/MS.	1	---	---	---	---	n.d.
HBFC-235B1 (C3H2F5Br)	mg/kg	With reference to US EPA 5021 method. Analysis was performed by GC/MS.	1	---	---	---	---	n.d.
HBFC-241B4 (C3H3FBr4)	mg/kg	With reference to US EPA 5021 method. Analysis was performed by GC/MS.	1	---	---	---	---	n.d.
HBFC-242B3 (C3H3F2Br3)	mg/kg	With reference to US EPA 5021 method. Analysis was performed by GC/MS.	1	---	---	---	---	n.d.
HBFC-243B2 (C3H3F3Br2)	mg/kg	With reference to US EPA 5021 method. Analysis was performed by GC/MS.	1	---	---	---	---	n.d.
HBFC-244B1 (C3H3F4Br)	mg/kg	With reference to US EPA 5021 method. Analysis was performed by GC/MS.	1	---	---	---	---	n.d.
HBFC-251B3 (C3H4FBr3)	mg/kg	With reference to US EPA 5021 method. Analysis was performed by GC/MS.	1	---	---	---	---	n.d.
HBFC-252B2 (C3H4F2Br2)	mg/kg	With reference to US EPA 5021 method. Analysis was performed by GC/MS.	1	---	---	---	---	n.d.
HBFC-253B1 (C3H4F3Br)	mg/kg	With reference to US EPA 5021 method. Analysis was performed by GC/MS.	1	---	---	---	---	n.d.
HBFC-261B2 (C3H5FBr2)	mg/kg	With reference to US EPA 5021 method. Analysis was performed by GC/MS.	1	---	---	---	---	n.d.
HBFC-262B1 (C3H5F2Br)	mg/kg	With reference to US EPA 5021 method. Analysis was performed by GC/MS.	1	---	---	---	---	n.d.

Unless otherwise stated the results shown in this test report refer only to the sample(s) tested. This test report cannot be reproduced, except in full, without prior written permission of the Company. 除非另有說明，此報告結果僅對測試的樣品負責。本報告未經本公司書面許可，不可部份複製。

This document is issued by the Company subject to its General Conditions of Service printed overleaf, available on request or accessible at [www.sgs.com/terms\\_and\\_conditions.htm](http://www.sgs.com/terms_and_conditions.htm) and for electronic format documents, subject to Terms and Conditions for Electronic Documents at [www.sgs.com/terms\\_e-document.htm](http://www.sgs.com/terms_e-document.htm). Attention is drawn to the limitation of liability, indemnification and jurisdiction issues defined therein. Any holder of this document is advised that information contained hereon reflects the Company's findings at the time of its intervention only and within the limits of Client's instructions, if any. The Company's sole responsibility is to its Client and this document does not exonerate parties to a transaction from exercising all their rights and obligations under the transaction documents. This document cannot be reproduced except in full, without prior written approval of the Company. Any unauthorized alteration, forgery or falsification of the content or appearance of this document is unlawful and offenders may be prosecuted to the fullest extent of the law.

# Survey Report

No. : CS/2011/30021A Date : 2011/04/07

Page : 19 of 38

ZYWYN CORPORATION

1270, OAKMEAD PARKWAY, SUITE 201, SUNNYVALE, CA 94085, U.S.A.



Test Item(s):	Unit	Method	MDL	Result				
				No.1	No.2	No.3	No.4	No.5
HBFC-271B1 (C3H6FBr)	mg/kg	With reference to US EPA 5021 method. Analysis was performed by GC/MS.	1	---	---	---	---	n.d.
<b>CHCs (Chlorinate hydrocarbon)</b>								
1,1,1,2-Tetrachloroethane (CAS No.: 630-20-6)	mg/kg	With reference to US EPA 5021 method. Analysis was performed by GC/MS.	1	---	---	---	---	n.d.
1,1,1-Trichloroethane (CAS No.: 71-55-6)	mg/kg	With reference to US EPA 5021 method. Analysis was performed by GC/MS.	1	---	---	---	---	n.d.
1,1,2,2-Tetrachloroethane (CAS No.: 79-34-5)	mg/kg	With reference to US EPA 5021 method. Analysis was performed by GC/MS.	1	---	---	---	---	n.d.
1,1,2-Trichloroethane (CAS No.: 79-00-5)	mg/kg	With reference to US EPA 5021 method. Analysis was performed by GC/MS.	1	---	---	---	---	n.d.
1,1-Dichloroethane (CAS No.: 75-34-3)	mg/kg	With reference to US EPA 5021 method. Analysis was performed by GC/MS.	1	---	---	---	---	n.d.
1,1-Dichloroethene (CAS No.: 75-35-4)	mg/kg	With reference to US EPA 5021 method. Analysis was performed by GC/MS.	1	---	---	---	---	n.d.
1,1-Dichloropropene (CAS No.: 563-58-6)	mg/kg	With reference to US EPA 5021 method. Analysis was performed by GC/MS.	1	---	---	---	---	n.d.
1,2,3-Trichloropropane (CAS No.: 96-18-4)	mg/kg	With reference to US EPA 5021 method. Analysis was performed by GC/MS.	1	---	---	---	---	n.d.
1,2-Dichloroethane (CAS No.: 107-06-2)	mg/kg	With reference to US EPA 5021 method. Analysis was performed by GC/MS.	1	---	---	---	---	n.d.
1,2-Dichloropropane (CAS No.: 78-87-5)	mg/kg	With reference to US EPA 5021 method. Analysis was performed by GC/MS.	1	---	---	---	---	n.d.

Unless otherwise stated the results shown in this test report refer only to the sample(s) tested. This test report cannot be reproduced, except in full, without prior written permission of the Company. 除非另有說明，此報告結果僅對測試的樣品負責。本報告未經本公司書面許可，不可部份複製。

This document is issued by the Company subject to its General Conditions of Service printed overleaf, available on request or accessible at [www.sgs.com/terms\\_and\\_conditions.htm](http://www.sgs.com/terms_and_conditions.htm) and for electronic format documents, subject to Terms and Conditions for Electronic Documents at [www.sgs.com/terms\\_e-document.htm](http://www.sgs.com/terms_e-document.htm). Attention is drawn to the limitation of liability, indemnification and jurisdiction issues defined therein. Any holder of this document is advised that information contained hereon reflects the Company's findings at the time of its intervention only and within the limits of Client's instructions, if any. The Company's sole responsibility is to its Client and this document does not exonerate parties to a transaction from exercising all their rights and obligations under the transaction documents. This document cannot be reproduced except in full, without prior written approval of the Company. Any unauthorized alteration, forgery or falsification of the content or appearance of this document is unlawful and offenders may be prosecuted to the fullest extent of the law.

# Survey Report

No. : CS/2011/30021A Date : 2011/04/07

Page : 20 of 38

ZYWYN CORPORATION

1270, OAKMEAD PARKWAY, SUITE 201, SUNNYVALE, CA 94085, U.S.A.



Test Item(s):	Unit	Method	MDL	Result				
				No.1	No.2	No.3	No.4	No.5
1,3-Dichloropropane (CAS No.: 142-28-9)	mg/kg	With reference to US EPA 5021 method. Analysis was performed by GC/MS.	1	---	---	---	---	n.d.
2,2-Dichloropropane (CAS No.: 594-20-7)	mg/kg	With reference to US EPA 5021 method. Analysis was performed by GC/MS.	1	---	---	---	---	n.d.
Carbon tetrachloride (CAS No.: 56-23-5)	mg/kg	With reference to US EPA 5021 method. Analysis was performed by GC/MS.	1	---	---	---	---	n.d.
Chloroethane (CAS No.: 75-00-3)	mg/kg	With reference to US EPA 5021 method. Analysis was performed by GC/MS.	1	---	---	---	---	n.d.
Chloroform (CAS No.: 67-66-3)	mg/kg	With reference to US EPA 5021 method. Analysis was performed by GC/MS.	1	---	---	---	---	n.d.
Chloromethane (CAS No.: 74-87-3)	mg/kg	With reference to US EPA 5021 method. Analysis was performed by GC/MS.	1	---	---	---	---	n.d.
cis-1,2-Dichloroethene (CAS No.: 156-59-2)	mg/kg	With reference to US EPA 5021 method. Analysis was performed by GC/MS.	1	---	---	---	---	n.d.
cis-1,3-Dichloropropene (CAS No.: 10061-01-5)	mg/kg	With reference to US EPA 5021 method. Analysis was performed by GC/MS.	1	---	---	---	---	n.d.
Hexachlorobutadiene (CAS No.: 87-68-3)	mg/kg	With reference to US EPA 5021 method. Analysis was performed by GC/MS.	1	---	---	---	---	n.d.
Methylene Chloride (CAS No.: 75-09-2)	mg/kg	With reference to US EPA 5021 method. Analysis was performed by GC/MS.	1	---	---	---	---	n.d.
Tetrachloroethene (CAS No.: 127-18-4)	mg/kg	With reference to US EPA 5021 method. Analysis was performed by GC/MS.	1	---	---	---	---	n.d.
trans-1,2-Dichloroethene (CAS No.: 156-60-5)	mg/kg	With reference to US EPA 5021 method. Analysis was performed by GC/MS.	1	---	---	---	---	n.d.

Unless otherwise stated the results shown in this test report refer only to the sample(s) tested. This test report cannot be reproduced, except in full, without prior written permission of the Company. 除非另有說明，此報告結果僅對測試的樣品負責。本報告未經本公司書面許可，不可部份複製。

This document is issued by the Company subject to its General Conditions of Service printed overleaf, available on request or accessible at [www.sgs.com/terms\\_and\\_conditions.htm](http://www.sgs.com/terms_and_conditions.htm) and for electronic format documents, subject to Terms and Conditions for Electronic Documents at [www.sgs.com/terms\\_e-document.htm](http://www.sgs.com/terms_e-document.htm). Attention is drawn to the limitation of liability, indemnification and jurisdiction issues defined therein. Any holder of this document is advised that information contained hereon reflects the Company's findings at the time of its intervention only and within the limits of Client's instructions, if any. The Company's sole responsibility is to its Client and this document does not exonerate parties to a transaction from exercising all their rights and obligations under the transaction documents. This document cannot be reproduced except in full, without prior written approval of the Company. Any unauthorized alteration, forgery or falsification of the content or appearance of this document is unlawful and offenders may be prosecuted to the fullest extent of the law.

# Survey Report

No. : CS/2011/30021A Date : 2011/04/07 Page : 21 of 38

ZYWYN CORPORATION  
1270, OAKMEAD PARKWAY, SUITE 201, SUNNYVALE, CA 94085, U.S.A.



Test Item(s):	Unit	Method	MDL	Result				
				No.1	No.2	No.3	No.4	No.5
trans-1,3-Dichloropropene (CAS No.: 10061-02-6)	mg/kg	With reference to US EPA 5021 method. Analysis was performed by GC/MS.	1	---	---	---	---	n.d.
Trichloroethylene (CAS No.: 79-01-6)	mg/kg	With reference to US EPA 5021 method. Analysis was performed by GC/MS.	1	---	---	---	---	n.d.

**Note :** 1. mg/kg = ppm ; 0.1wt% = 1000ppm

2. n.d. = Not Detected

3. MDL = Method Detection Limit

4. Spot-test:

Negative = Absence of Cr(VI) coating / surface layer,

Positive = Presence of Cr(VI) coating / surface layer;

(The tested sample should be further verified by boiling-water-extraction method if the spot test result cannot be confirmed.)

Boiling-water-extraction:

Negative = Absence of Cr(VI) coating / surface layer.

Positive = Presence of Cr(VI) coating / surface layer;

the detected concentration in boiling-water-extraction solution is equal or greater than 0.02 mg/kg with 50 cm<sup>2</sup> sample surface area.

5. "---" = Not Conducted

6. " - " = Not Regulated

7. \*\* = Qualitative analysis (No Unit)

8. Negative = Undetectable / Positive = Detectable

9. Negative = < 1.0 %, Positive = > 1.0 %

## **PFOS Reference Information : Directive 2006/122/EC**

(1) May not be placed on the market or used as a substance or constituent of preparations in a concentration equal to or higher than 0.005 % by mass.

(2) May not be placed on the market in semi-finished products or articles, or parts thereof, if the concentration of PFOS is equal to or higher than 0.1 % by mass calculated with reference to the mass of structurally or microstructurally distinct parts that contain PFOS or, for textiles or other coated materials, if the amount of PFOS is equal to or higher than 1µg/m<sup>2</sup> of the coated material.

Unless otherwise stated the results shown in this test report refer only to the sample(s) tested. This test report cannot be reproduced, except in full, without prior written permission of the Company. 除非另有說明，此報告結果僅對測試的樣品負責。本報告未經本公司書面許可，不可部份複製。

This document is issued by the Company subject to its General Conditions of Service printed overleaf, available on request or accessible at [www.sgs.com/terms\\_and\\_conditions.htm](http://www.sgs.com/terms_and_conditions.htm) and for electronic format documents, subject to Terms and Conditions for Electronic Documents at [www.sgs.com/terms\\_e-document.htm](http://www.sgs.com/terms_e-document.htm). Attention is drawn to the limitation of liability, indemnification and jurisdiction issues defined therein. Any holder of this document is advised that information contained hereon reflects the Company's findings at the time of its intervention only and within the limits of Client's instructions, if any. The Company's sole responsibility is to its Client and this document does not exonerate parties to a transaction from exercising all their rights and obligations under the transaction documents. This document cannot be reproduced except in full, without prior written approval of the Company. Any unauthorized alteration, forgery or falsification of the content or appearance of this document is unlawful and offenders may be prosecuted to the fullest extent of the law.

SGS Taiwan Ltd.  
台灣檢驗科技股份有限公司 | Chemical-Taipei 33 WuChyuan Road, Wuku Industrial Zone, New Taipei City, Taiwan / 新北市五股工業區五權路33號 + 886 (02)2299 3279 f + 886 (02)2299 3237 [www.sgs.com](http://www.sgs.com)

## Survey Report

No. : CS/2011/30021A Date : 2011/04/07

Page : 22 of 38

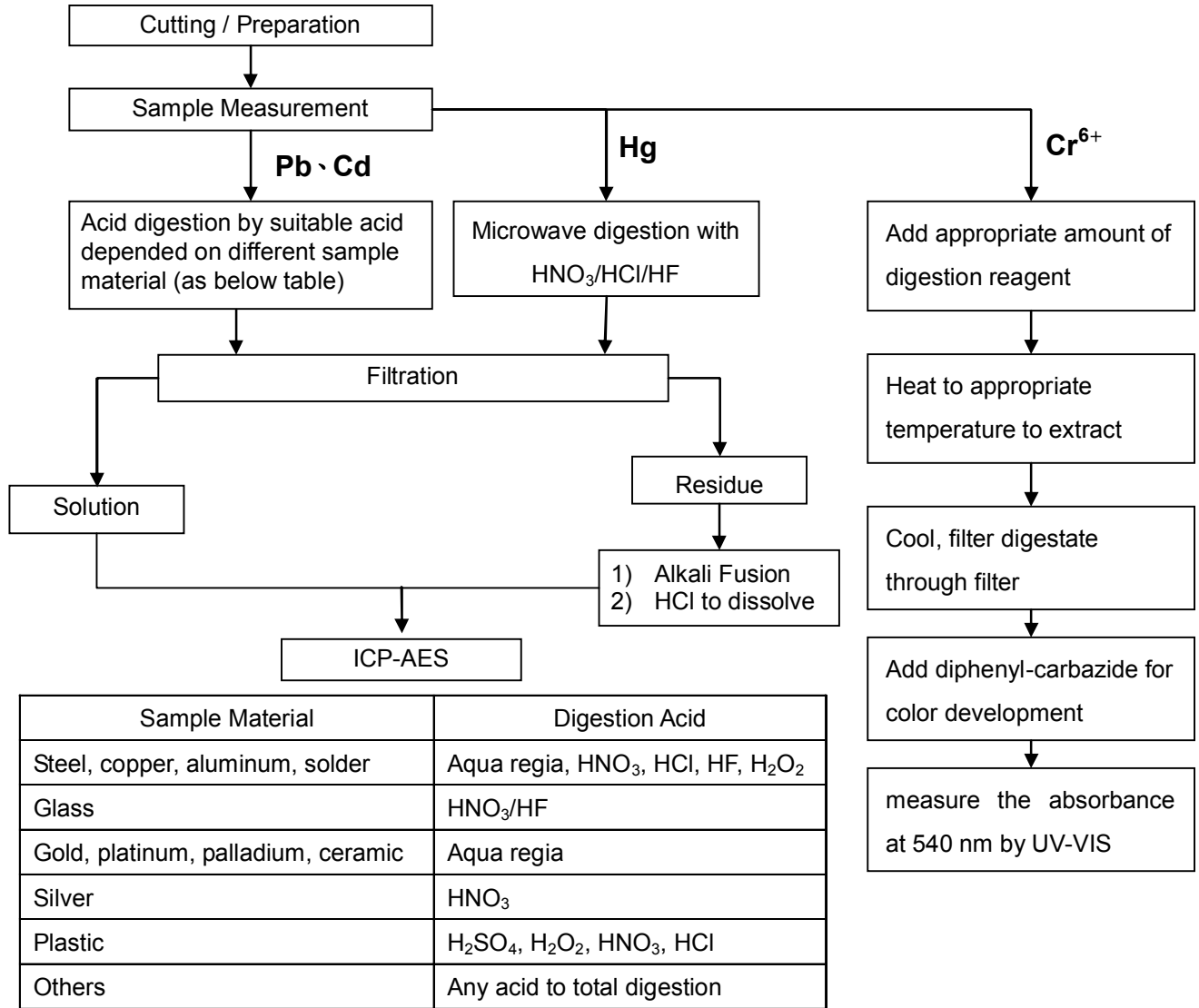
ZYWYN CORPORATION

1270, OAKMEAD PARKWAY, SUITE 201, SUNNYVALE, CA 94085, U.S.A.



### PART NAME No.1

- 1) These samples were dissolved totally by pre-conditioning method according to below flow chart.  
(Cr<sup>6+</sup> test method excluded)
- 2) Name of the person who made measurement: Climbgreat Yang
- 3) Name of the person in charge of measurement: Troy Chang



Unless otherwise stated the results shown in this test report refer only to the sample(s) tested. This test report cannot be reproduced, except in full, without prior written permission of the Company. 除非另有說明，此報告結果僅對測試的樣品負責。本報告未經本公司書面許可，不可部份複製。  
This document is issued by the Company subject to its General Conditions of Service printed overleaf, available on request or accessible at [www.sgs.com/terms\\_and\\_conditions.htm](http://www.sgs.com/terms_and_conditions.htm) and for electronic format documents, subject to Terms and Conditions for Electronic Documents at [www.sgs.com/terms\\_e-document.htm](http://www.sgs.com/terms_e-document.htm). Attention is drawn to the limitation of liability, indemnification and jurisdiction issues defined therein. Any holder of this document is advised that information contained hereon reflects the Company's findings at the time of its intervention only and within the limits of Client's instructions, if any. The Company's sole responsibility is to its Client and this document does not exonerate parties to a transaction from exercising all their rights and obligations under the transaction documents. This document cannot be reproduced except in full, without prior written approval of the Company. Any unauthorized alteration, forgery or falsification of the content or appearance of this document is unlawful and offenders may be prosecuted to the fullest extent of the law.

## Survey Report

No. : CS/2011/30021A Date : 2011/04/07

Page : 23 of 38

ZYWYN CORPORATION

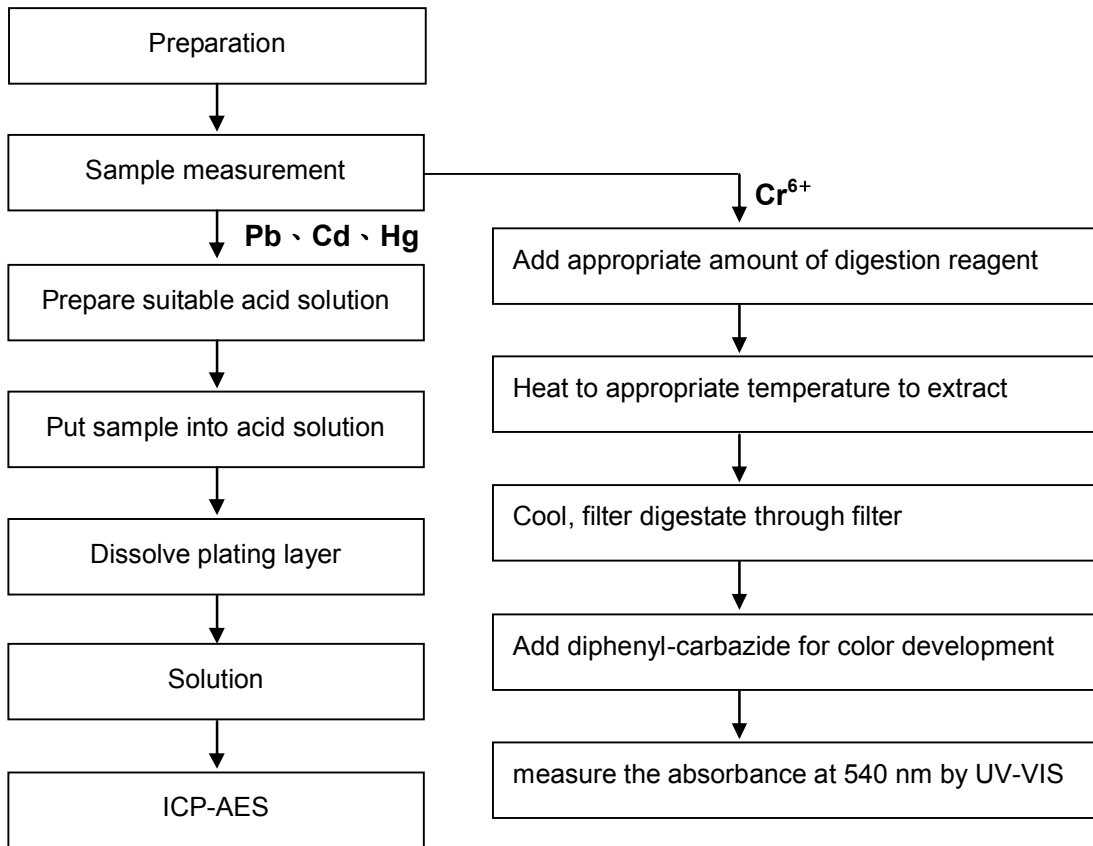
1270, OAKMEAD PARKWAY, SUITE 201, SUNNYVALE, CA 94085, U.S.A.



PART NAME No.2

- 1) These samples were dissolved totally by pre-conditioning method according to below flow chart. (Cr<sup>6+</sup> test method excluded)
- 2) Name of the person who made measurement: Climbgreat Yang
- 3) Name of the person in charge of measurement: Troy Chang

### Flow Chart of Stripping method for metal analysis



Unless otherwise stated the results shown in this test report refer only to the sample(s) tested. This test report cannot be reproduced, except in full, without prior written permission of the Company. 除非另有說明，此報告結果僅對測試的樣品負責。本報告未經本公司書面許可，不可部份複製。  
 This document is issued by the Company subject to its General Conditions of Service printed overleaf, available on request or accessible at [www.sgs.com/terms\\_and\\_conditions.htm](http://www.sgs.com/terms_and_conditions.htm) and for electronic format documents, subject to Terms and Conditions for Electronic Documents at [www.sgs.com/terms\\_e-document.htm](http://www.sgs.com/terms_e-document.htm). Attention is drawn to the limitation of liability, indemnification and jurisdiction issues defined therein. Any holder of this document is advised that information contained hereon reflects the Company's findings at the time of its intervention only and within the limits of Client's instructions, if any. The Company's sole responsibility is to its Client and this document does not exonerate parties to a transaction from exercising all their rights and obligations under the transaction documents. This document cannot be reproduced except in full, without prior written approval of the Company. Any unauthorized alteration, forgery or falsification of the content or appearance of this document is unlawful and offenders may be prosecuted to the fullest extent of the law.

## Survey Report

No. : CS/2011/30021A Date : 2011/04/07

Page : 24 of 38

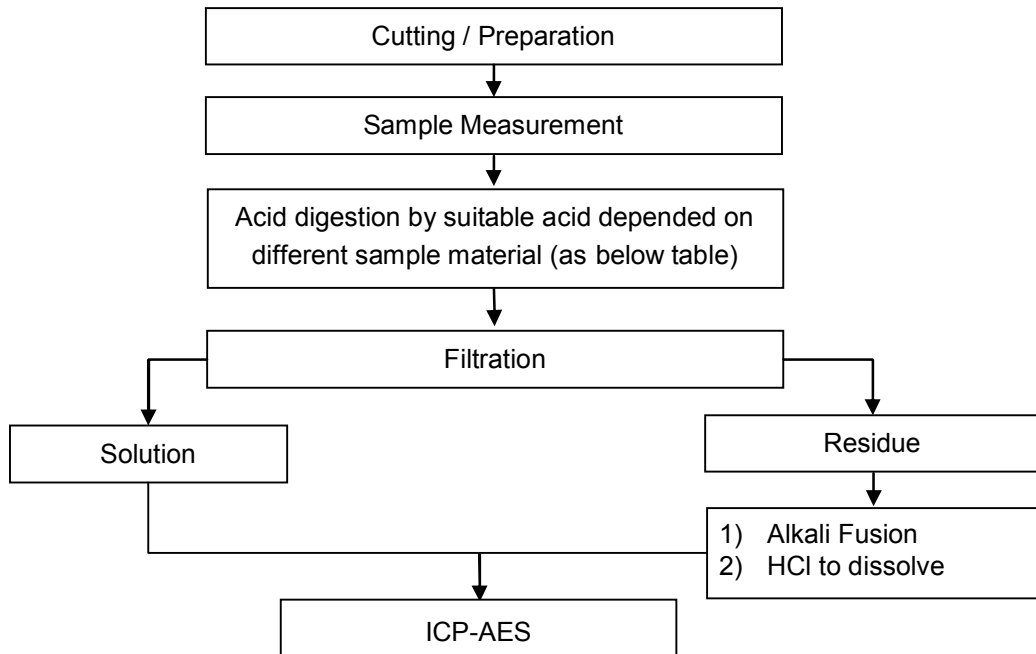
ZYWYN CORPORATION

1270, OAKMEAD PARKWAY, SUITE 201, SUNNYVALE, CA 94085, U.S.A.



- 1) These samples were dissolved totally by pre-conditioning method according to below flow chart.
- 2) Name of the person who made measurement: Climbgreat Yang
- 3) Name of the person in charge of measurement: Troy Chang

### Flow Chart of digestion for the elements analysis performed by ICP-AES



Steel, copper, aluminum, solder	Aqua regia, HNO <sub>3</sub> , HCl, HF, H <sub>2</sub> O <sub>2</sub>
Glass	HNO <sub>3</sub> /HF
Gold, platinum, palladium, ceramic	Aqua regia
Silver	HNO <sub>3</sub>
Plastic	H <sub>2</sub> SO <sub>4</sub> , H <sub>2</sub> O <sub>2</sub> , HNO <sub>3</sub> , HCl
Others	Any acid to total digestion

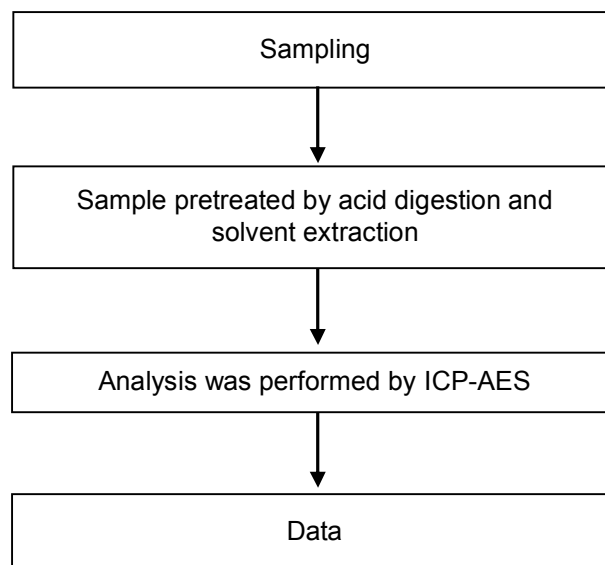
Unless otherwise stated the results shown in this test report refer only to the sample(s) tested. This test report cannot be reproduced, except in full, without prior written permission of the Company. 除非另有說明，此報告結果僅對測試的樣品負責。本報告未經本公司書面許可，不可部份複製。

This document is issued by the Company subject to its General Conditions of Service printed overleaf, available on request or accessible at [www.sgs.com/terms\\_and\\_conditions.htm](http://www.sgs.com/terms_and_conditions.htm) and for electronic format documents, subject to Terms and Conditions for Electronic Documents at [www.sgs.com/terms\\_e-document.htm](http://www.sgs.com/terms_e-document.htm). Attention is drawn to the limitation of liability, indemnification and jurisdiction issues defined therein. Any holder of this document is advised that information contained hereon reflects the Company's findings at the time of its intervention only and within the limits of Client's instructions, if any. The Company's sole responsibility is to its Client and this document does not exonerate parties to a transaction from exercising all their rights and obligations under the transaction documents. This document cannot be reproduced except in full, without prior written approval of the Company. Any unauthorized alteration, forgery or falsification of the content or appearance of this document is unlawful and offenders may be prosecuted to the fullest extent of the law.



### Analytical flow chart of Cobalt dichloride

- 1) Name of the person who made measurement: Climbgreat Yang
- 2) Name of the person in charge of measurement: Chenyu Kung



Unless otherwise stated the results shown in this test report refer only to the sample(s) tested. This test report cannot be reproduced, except in full, without prior written permission of the Company. 除非另有說明，此報告結果僅對測試的樣品負責。本報告未經本公司書面許可，不可部份複製。

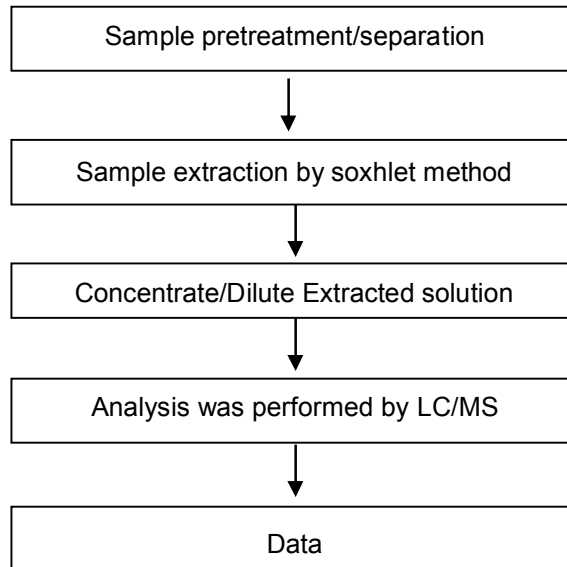
This document is issued by the Company subject to its General Conditions of Service printed overleaf, available on request or accessible at [www.sgs.com/terms\\_and\\_conditions.htm](http://www.sgs.com/terms_and_conditions.htm) and for electronic format documents, subject to Terms and Conditions for Electronic Documents at [www.sgs.com/terms\\_e-document.htm](http://www.sgs.com/terms_e-document.htm). Attention is drawn to the limitation of liability, indemnification and jurisdiction issues defined therein. Any holder of this document is advised that information contained hereon reflects the Company's findings at the time of its intervention only and within the limits of Client's instructions, if any. The Company's sole responsibility is to its Client and this document does not exonerate parties to a transaction from exercising all their rights and obligations under the transaction documents. This document cannot be reproduced except in full, without prior written approval of the Company. Any unauthorized alteration, forgery or falsification of the content or appearance of this document is unlawful and offenders may be prosecuted to the fullest extent of the law.



### Analytical flow chart of Soxhlet extraction (LC/MS) procedure

- 1) Name of the person who made measurement: Lydia Fu
- 2) Name of the person in charge of measurement: Shinjyh Chen

■ Test Items: PFOS/PFOA、Benzotriazole

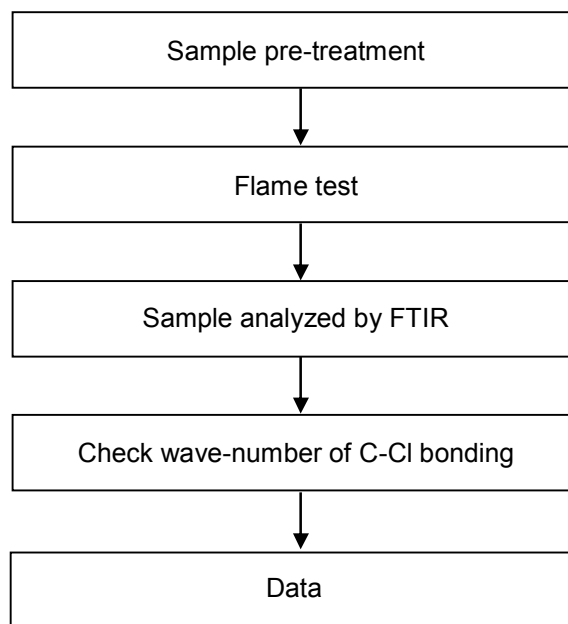


Unless otherwise stated the results shown in this test report refer only to the sample(s) tested. This test report cannot be reproduced, except in full, without prior written permission of the Company. 除非另有說明，此報告結果僅對測試的樣品負責。本報告未經本公司書面許可，不可部份複製。  
 This document is issued by the Company subject to its General Conditions of Service printed overleaf, available on request or accessible at [www.sgs.com/terms\\_and\\_conditions.htm](http://www.sgs.com/terms_and_conditions.htm) and for electronic format documents, subject to Terms and Conditions for Electronic Documents at [www.sgs.com/terms\\_e-document.htm](http://www.sgs.com/terms_e-document.htm). Attention is drawn to the limitation of liability, indemnification and jurisdiction issues defined therein. Any holder of this document is advised that information contained hereon reflects the Company's findings at the time of its intervention only and within the limits of Client's instructions, if any. The Company's sole responsibility is to its Client and this document does not exonerate parties to a transaction from exercising all their rights and obligations under the transaction documents. This document cannot be reproduced except in full, without prior written approval of the Company. Any unauthorized alteration, forgery or falsification of the content or appearance of this document is unlawful and offenders may be prosecuted to the fullest extent of the law.



### Analysis flow chart for determination of PVC in material

- 1) Name of the person who made measurement: Eva Chao
- 2) Name of the person in charge of measurement: Shinjyh Chen



Unless otherwise stated the results shown in this test report refer only to the sample(s) tested. This test report cannot be reproduced, except in full, without prior written permission of the Company. 除非另有說明，此報告結果僅對測試的樣品負責。本報告未經本公司書面許可，不可部份複製。

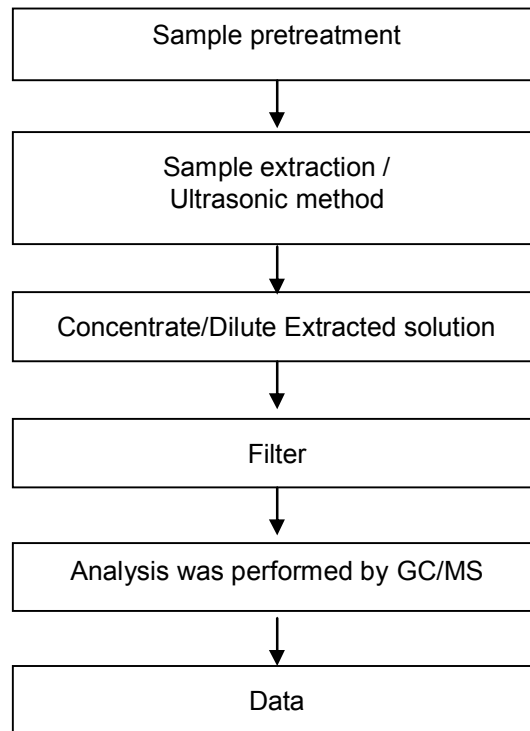
This document is issued by the Company subject to its General Conditions of Service printed overleaf, available on request or accessible at [www.sgs.com/terms\\_and\\_conditions.htm](http://www.sgs.com/terms_and_conditions.htm) and for electronic format documents, subject to Terms and Conditions for Electronic Documents at [www.sgs.com/terms\\_e-document.htm](http://www.sgs.com/terms_e-document.htm). Attention is drawn to the limitation of liability, indemnification and jurisdiction issues defined therein. Any holder of this document is advised that information contained hereon reflects the Company's findings at the time of its intervention only and within the limits of Client's instructions, if any. The Company's sole responsibility is to its Client and this document does not exonerate parties to a transaction from exercising all their rights and obligations under the transaction documents. This document cannot be reproduced except in full, without prior written approval of the Company. Any unauthorized alteration, forgery or falsification of the content or appearance of this document is unlawful and offenders may be prosecuted to the fullest extent of the law.



### Analytical flow chart of Ultrasonic extraction (GC/MS) procedure

- 1) Name of the person who made measurement: Roman Wong
- 2) Name of the person in charge of measurement: Shinjyh Chen

■ Test Items: HBCDD、Dimethyl Fumarate、PAHs、AP、Ethylene glycol ether

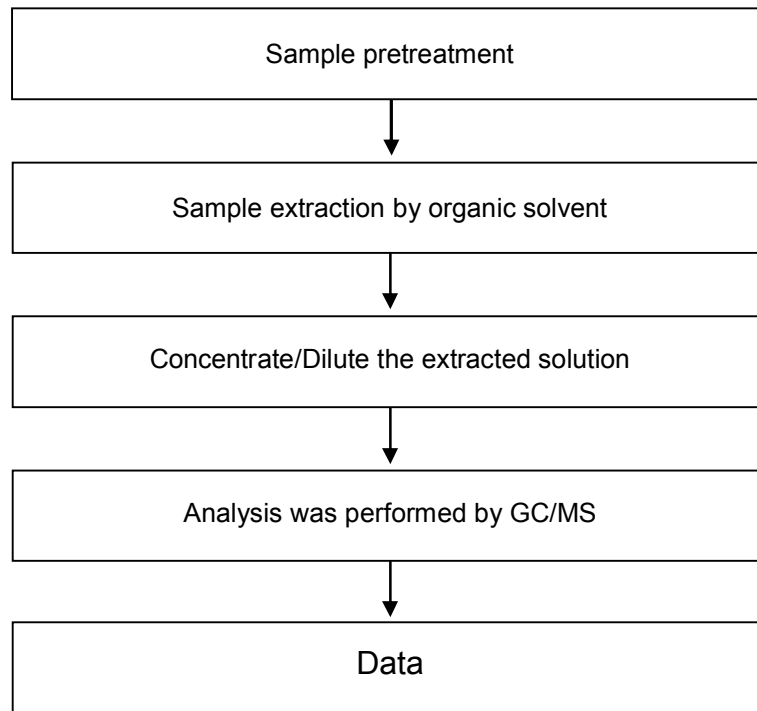


Unless otherwise stated the results shown in this test report refer only to the sample(s) tested. This test report cannot be reproduced, except in full, without prior written permission of the Company. 除非另有說明，此報告結果僅對測試的樣品負責。本報告未經本公司書面許可，不可部份複製。  
 This document is issued by the Company subject to its General Conditions of Service printed overleaf, available on request or accessible at [www.sgs.com/terms\\_and\\_conditions.htm](http://www.sgs.com/terms_and_conditions.htm) and for electronic format documents, subject to Terms and Conditions for Electronic Documents at [www.sgs.com/terms\\_e-document.htm](http://www.sgs.com/terms_e-document.htm). Attention is drawn to the limitation of liability, indemnification and jurisdiction issues defined therein. Any holder of this document is advised that information contained hereon reflects the Company's findings at the time of its intervention only and within the limits of Client's instructions, if any. The Company's sole responsibility is to its Client and this document does not exonerate parties to a transaction from exercising all their rights and obligations under the transaction documents. This document cannot be reproduced except in full, without prior written approval of the Company. Any unauthorized alteration, forgery or falsification of the content or appearance of this document is unlawful and offenders may be prosecuted to the fullest extent of the law.



## Chlorinated Flame retardant analytical flow chart

- 1) Name of the person who made measurement: Barry Tseng
  - 2) Name of the person in charge of measurement: Troy Chang
- Reference method: US EPA 8270D, US EPA 3540
  - Test Items: PCBs, PCNs, PCTs, Mirex, CP, MCCP



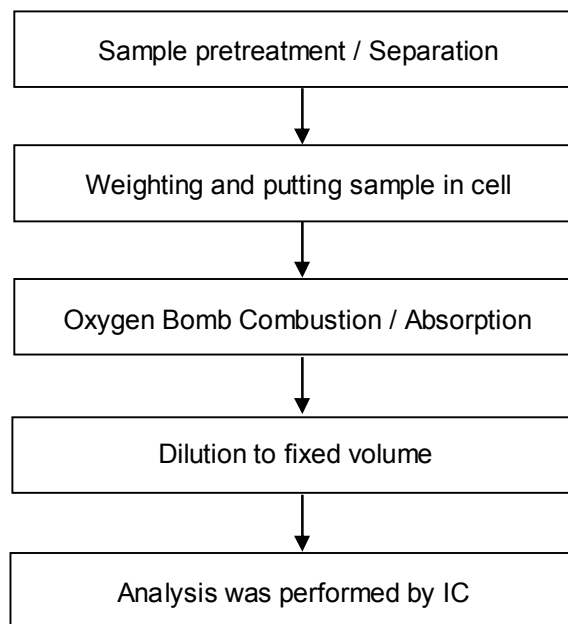
Unless otherwise stated the results shown in this test report refer only to the sample(s) tested. This test report cannot be reproduced, except in full, without prior written permission of the Company. 除非另有說明，此報告結果僅對測試的樣品負責。本報告未經本公司書面許可，不可部份複製。

This document is issued by the Company subject to its General Conditions of Service printed overleaf, available on request or accessible at [www.sgs.com/terms\\_and\\_conditions.htm](http://www.sgs.com/terms_and_conditions.htm) and for electronic format documents, subject to Terms and Conditions for Electronic Documents at [www.sgs.com/terms\\_e-document.htm](http://www.sgs.com/terms_e-document.htm). Attention is drawn to the limitation of liability, indemnification and jurisdiction issues defined therein. Any holder of this document is advised that information contained hereon reflects the Company's findings at the time of its intervention only and within the limits of Client's instructions, if any. The Company's sole responsibility is to its Client and this document does not exonerate parties to a transaction from exercising all their rights and obligations under the transaction documents. This document cannot be reproduced except in full, without prior written approval of the Company. Any unauthorized alteration, forgery or falsification of the content or appearance of this document is unlawful and offenders may be prosecuted to the fullest extent of the law.



### Analytical flow chart of halogen content

- 1) Name of the person who made measurement: Rita Chen
- 2) Name of the person in charge of measurement: Troy Chang



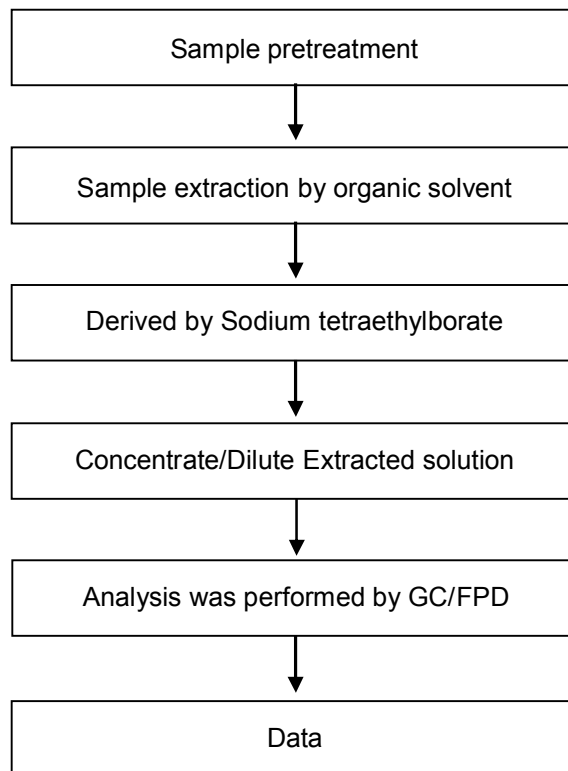
Unless otherwise stated the results shown in this test report refer only to the sample(s) tested. This test report cannot be reproduced, except in full, without prior written permission of the Company. 除非另有說明，此報告結果僅對測試的樣品負責。本報告未經本公司書面許可，不可部份複製。

This document is issued by the Company subject to its General Conditions of Service printed overleaf, available on request or accessible at [www.sgs.com/terms\\_and\\_conditions.htm](http://www.sgs.com/terms_and_conditions.htm) and for electronic format documents, subject to Terms and Conditions for Electronic Documents at [www.sgs.com/terms\\_e-document.htm](http://www.sgs.com/terms_e-document.htm). Attention is drawn to the limitation of liability, indemnification and jurisdiction issues defined therein. Any holder of this document is advised that information contained hereon reflects the Company's findings at the time of its intervention only and within the limits of Client's instructions, if any. The Company's sole responsibility is to its Client and this document does not exonerate parties to a transaction from exercising all their rights and obligations under the transaction documents. This document cannot be reproduced except in full, without prior written approval of the Company. Any unauthorized alteration, forgery or falsification of the content or appearance of this document is unlawful and offenders may be prosecuted to the fullest extent of the law.



### Analytical flow chart of Organic-Tin content

- 1) Name of the person who made measurement: Ginny Chen
- 2) Name of the person in charge of measurement: Troy Chang



Unless otherwise stated the results shown in this test report refer only to the sample(s) tested. This test report cannot be reproduced, except in full, without prior written permission of the Company. 除非另有說明，此報告結果僅對測試的樣品負責。本報告未經本公司書面許可，不可部份複製。  
 This document is issued by the Company subject to its General Conditions of Service printed overleaf, available on request or accessible at [www.sgs.com/terms\\_and\\_conditions.htm](http://www.sgs.com/terms_and_conditions.htm) and for electronic format documents, subject to Terms and Conditions for Electronic Documents at [www.sgs.com/terms\\_e-document.htm](http://www.sgs.com/terms_e-document.htm). Attention is drawn to the limitation of liability, indemnification and jurisdiction issues defined therein. Any holder of this document is advised that information contained hereon reflects the Company's findings at the time of its intervention only and within the limits of Client's instructions, if any. The Company's sole responsibility is to its Client and this document does not exonerate parties to a transaction from exercising all their rights and obligations under the transaction documents. This document cannot be reproduced except in full, without prior written approval of the Company. Any unauthorized alteration, forgery or falsification of the content or appearance of this document is unlawful and offenders may be prosecuted to the fullest extent of the law.



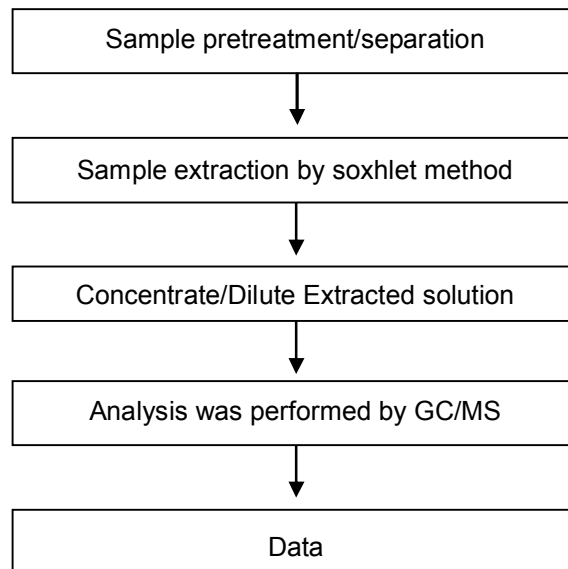
### Analytical flow chart of Soxhlet extraction (GC/MS) procedure

1) Name of the person who made measurement: Lydia Fu

2) Name of the person in charge of measurement: Shinjyh Chen

■ Test Items: Phthalate 、 Benzotriazole 、 HBCDD 、 NP 、 DBBT 、

Organic phosphorus compounds

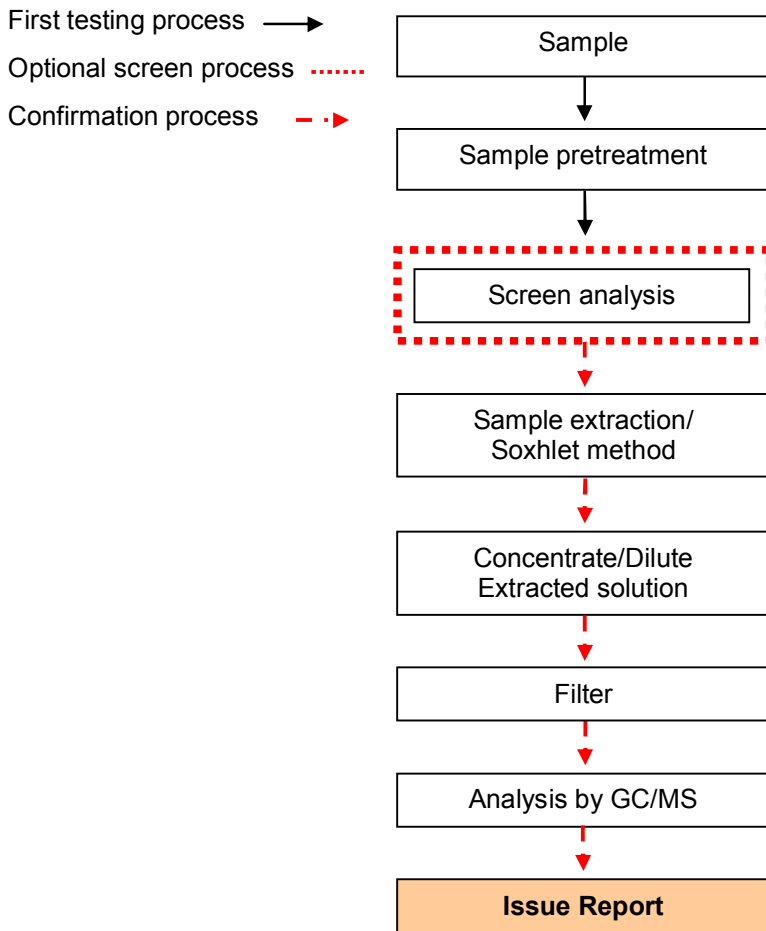


Unless otherwise stated the results shown in this test report refer only to the sample(s) tested. This test report cannot be reproduced, except in full, without prior written permission of the Company. 除非另有說明，此報告結果僅對測試的樣品負責。本報告未經本公司書面許可，不可部份複製。  
 This document is issued by the Company subject to its General Conditions of Service printed overleaf, available on request or accessible at [www.sgs.com/terms\\_and\\_conditions.htm](http://www.sgs.com/terms_and_conditions.htm) and for electronic format documents, subject to Terms and Conditions for Electronic Documents at [www.sgs.com/terms\\_e-document.htm](http://www.sgs.com/terms_e-document.htm). Attention is drawn to the limitation of liability, indemnification and jurisdiction issues defined therein. Any holder of this document is advised that information contained hereon reflects the Company's findings at the time of its intervention only and within the limits of Client's instructions, if any. The Company's sole responsibility is to its Client and this document does not exonerate parties to a transaction from exercising all their rights and obligations under the transaction documents. This document cannot be reproduced except in full, without prior written approval of the Company. Any unauthorized alteration, forgery or falsification of the content or appearance of this document is unlawful and offenders may be prosecuted to the fullest extent of the law.



### PBB/PBDE analytical FLOW CHART

- 1) Name of the person who made measurement: Roman Wong
- 2) Name of the person in charge of measurement: Troy Chang

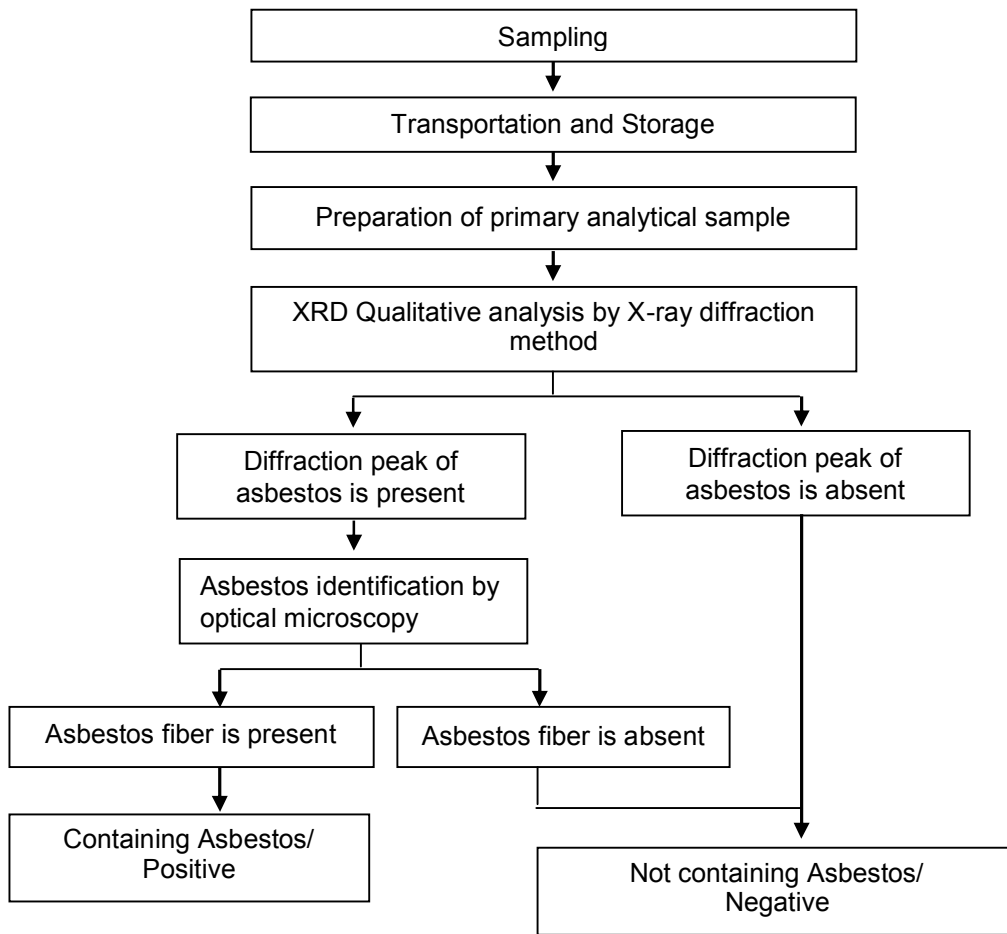


Unless otherwise stated the results shown in this test report refer only to the sample(s) tested. This test report cannot be reproduced, except in full, without prior written permission of the Company. 除非另有說明，此報告結果僅對測試的樣品負責。本報告未經本公司書面許可，不可部份複製。  
 This document is issued by the Company subject to its General Conditions of Service printed overleaf, available on request or accessible at [www.sgs.com/terms\\_and\\_conditions.htm](http://www.sgs.com/terms_and_conditions.htm) and for electronic format documents, subject to Terms and Conditions for Electronic Documents at [www.sgs.com/terms\\_e-document.htm](http://www.sgs.com/terms_e-document.htm). Attention is drawn to the limitation of liability, indemnification and jurisdiction issues defined therein. Any holder of this document is advised that information contained hereon reflects the Company's findings at the time of its intervention only and within the limits of Client's instructions, if any. The Company's sole responsibility is to its Client and this document does not exonerate parties to a transaction from exercising all their rights and obligations under the transaction documents. This document cannot be reproduced except in full, without prior written approval of the Company. Any unauthorized alteration, forgery or falsification of the content or appearance of this document is unlawful and offenders may be prosecuted to the fullest extent of the law.



### Analysis flow chart for determination of Asbestos

- 1) Name of the person who made measurement: Victor Kao
- 2) Name of the person in charge of measurement: Wendy Wei

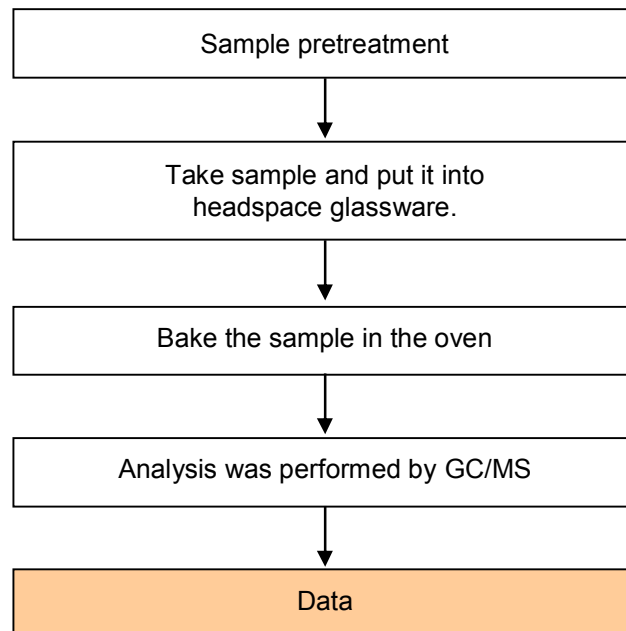


Unless otherwise stated the results shown in this test report refer only to the sample(s) tested. This test report cannot be reproduced, except in full, without prior written permission of the Company. 除非另有說明，此報告結果僅對測試的樣品負責。本報告未經本公司書面許可，不可部份複製。  
This document is issued by the Company subject to its General Conditions of Service printed overleaf, available on request or accessible at [www.sgs.com/terms\\_and\\_conditions.htm](http://www.sgs.com/terms_and_conditions.htm) and for electronic format documents, subject to Terms and Conditions for Electronic Documents at [www.sgs.com/terms\\_e-document.htm](http://www.sgs.com/terms_e-document.htm). Attention is drawn to the limitation of liability, indemnification and jurisdiction issues defined therein. Any holder of this document is advised that information contained hereon reflects the Company's findings at the time of its intervention only and within the limits of Client's instructions, if any. The Company's sole responsibility is to its Client and this document does not exonerate parties to a transaction from exercising all their rights and obligations under the transaction documents. This document cannot be reproduced except in full, without prior written approval of the Company. Any unauthorized alteration, forgery or falsification of the content or appearance of this document is unlawful and offenders may be prosecuted to the fullest extent of the law.



### Analytical flow chart of volatile organic compounds (VOCs)

- 1) Reference method : US EPA 5021
- 2) Name of the person who made measurement : Dalki Yen
- 3) Name of the person in charge of measurement : Shinjyh Chen



Unless otherwise stated the results shown in this test report refer only to the sample(s) tested. This test report cannot be reproduced, except in full, without prior written permission of the Company. 除非另有說明，此報告結果僅對測試的樣品負責。本報告未經本公司書面許可，不可部份複製。

This document is issued by the Company subject to its General Conditions of Service printed overleaf, available on request or accessible at [www.sgs.com/terms\\_and\\_conditions.htm](http://www.sgs.com/terms_and_conditions.htm) and for electronic format documents, subject to Terms and Conditions for Electronic Documents at [www.sgs.com/terms\\_e-document.htm](http://www.sgs.com/terms_e-document.htm). Attention is drawn to the limitation of liability, indemnification and jurisdiction issues defined therein. Any holder of this document is advised that information contained hereon reflects the Company's findings at the time of its intervention only and within the limits of Client's instructions, if any. The Company's sole responsibility is to its Client and this document does not exonerate parties to a transaction from exercising all their rights and obligations under the transaction documents. This document cannot be reproduced except in full, without prior written approval of the Company. Any unauthorized alteration, forgery or falsification of the content or appearance of this document is unlawful and offenders may be prosecuted to the fullest extent of the law.

## Survey Report

No. : CS/2011/30021A Date : 2011/04/07

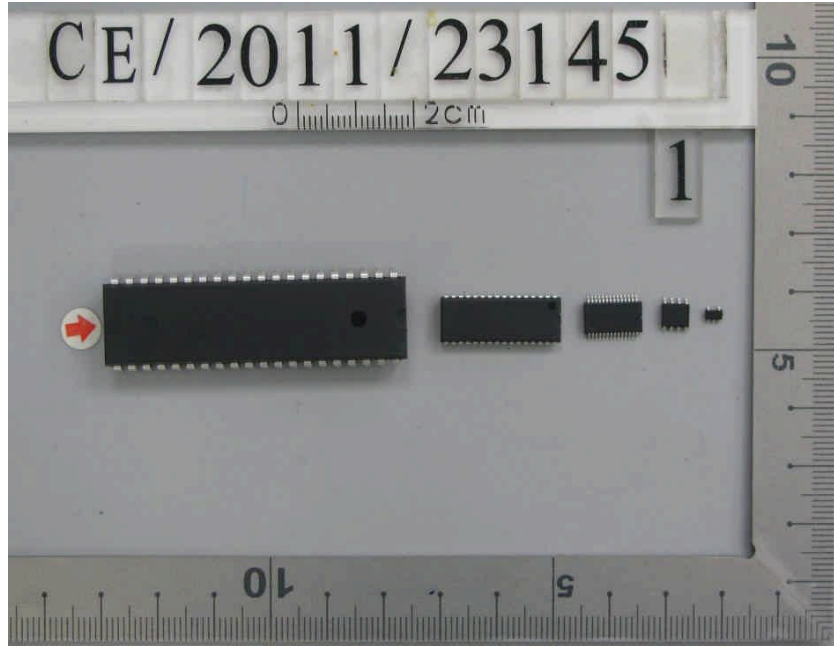
Page : 36 of 38

ZYWYN CORPORATION

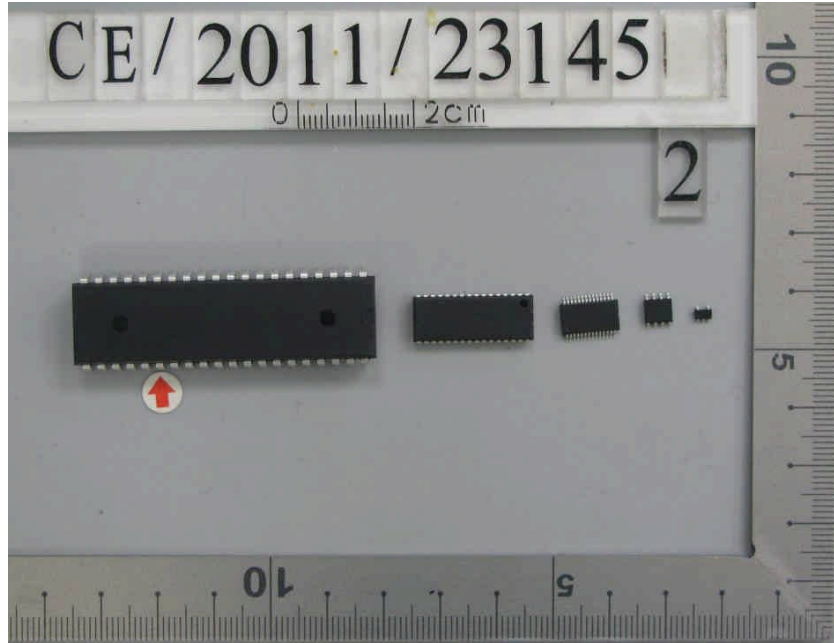
1270, OAKMEAD PARKWAY, SUITE 201, SUNNYVALE, CA 94085, U.S.A.



PART NAME No.1



PART NAME No.2



Unless otherwise stated the results shown in this test report refer only to the sample(s) tested. This test report cannot be reproduced, except in full, without prior written permission of the Company. 除非另有說明，此報告結果僅對測試的樣品負責。本報告未經本公司書面許可，不可部份複製。  
 This document is issued by the Company subject to its General Conditions of Service printed overleaf, available on request or accessible at [www.sgs.com/terms\\_and\\_conditions.htm](http://www.sgs.com/terms_and_conditions.htm) and for electronic format documents, subject to Terms and Conditions for Electronic Documents at [www.sgs.com/terms\\_e-document.htm](http://www.sgs.com/terms_e-document.htm). Attention is drawn to the limitation of liability, indemnification and jurisdiction issues defined therein. Any holder of this document is advised that information contained hereon reflects the Company's findings at the time of its intervention only and within the limits of Client's instructions, if any. The Company's sole responsibility is to its Client and this document does not exonerate parties to a transaction from exercising all their rights and obligations under the transaction documents. This document cannot be reproduced except in full, without prior written approval of the Company. Any unauthorized alteration, forgery or falsification of the content or appearance of this document is unlawful and offenders may be prosecuted to the fullest extent of the law.

## Survey Report

No. : CS/2011/30021A Date : 2011/04/07

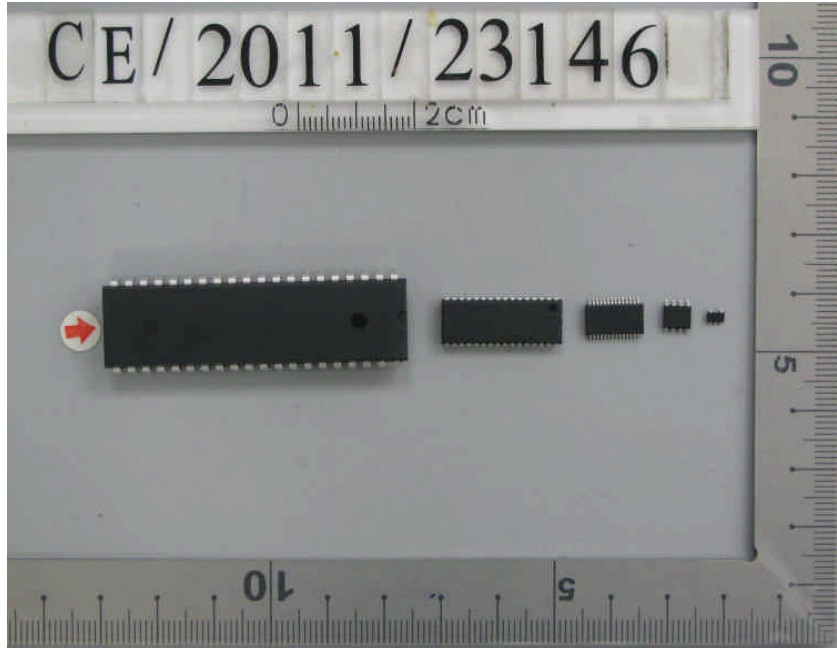
Page : 37 of 38

ZYWYN CORPORATION

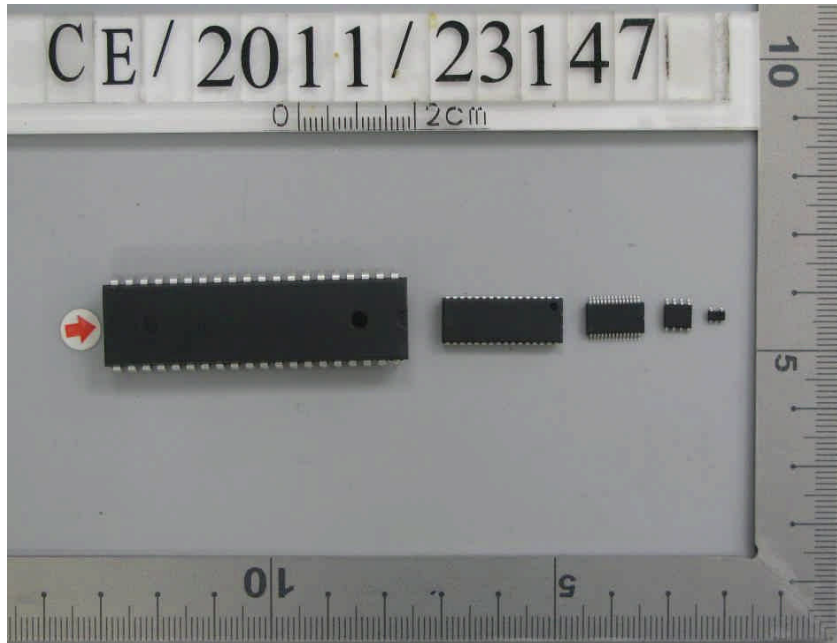
1270, OAKMEAD PARKWAY, SUITE 201, SUNNYVALE, CA 94085, U.S.A.



PART NAME No.3



PART NAME No.4



Unless otherwise stated the results shown in this test report refer only to the sample(s) tested. This test report cannot be reproduced, except in full, without prior written permission of the Company. 除非另有說明，此報告結果僅對測試的樣品負責。本報告未經本公司書面許可，不可部份複製。  
This document is issued by the Company subject to its General Conditions of Service printed overleaf, available on request or accessible at [www.sgs.com/terms\\_and\\_conditions.htm](http://www.sgs.com/terms_and_conditions.htm) and for electronic format documents, subject to Terms and Conditions for Electronic Documents at [www.sgs.com/terms\\_e-document.htm](http://www.sgs.com/terms_e-document.htm). Attention is drawn to the limitation of liability, indemnification and jurisdiction issues defined therein. Any holder of this document is advised that information contained hereon reflects the Company's findings at the time of its intervention only and within the limits of Client's instructions, if any. The Company's sole responsibility is to its Client and this document does not exonerate parties to a transaction from exercising all their rights and obligations under the transaction documents. This document cannot be reproduced except in full, without prior written approval of the Company. Any unauthorized alteration, forgery or falsification of the content or appearance of this document is unlawful and offenders may be prosecuted to the fullest extent of the law.

## Survey Report

No. : CS/2011/30021A Date : 2011/04/07

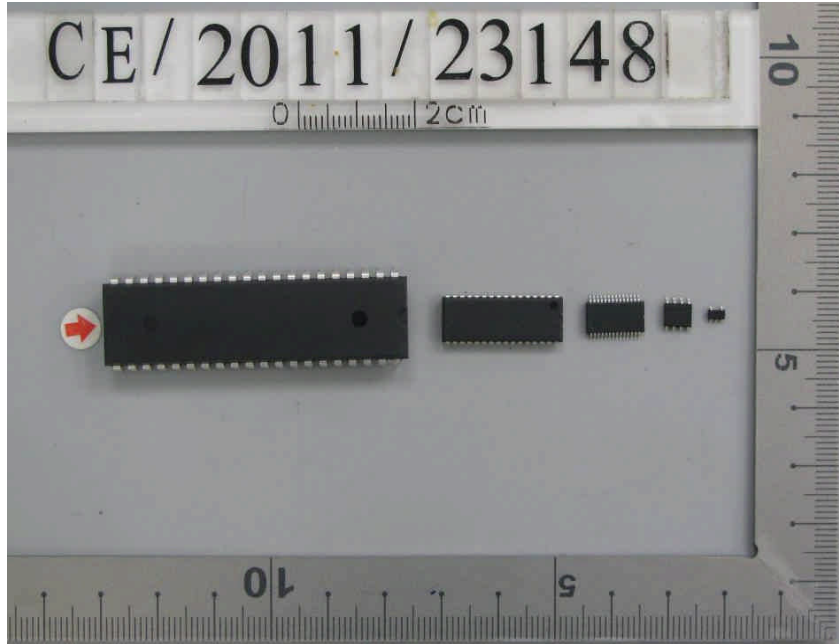
Page : 38 of 38

ZYWYN CORPORATION

1270, OAKMEAD PARKWAY, SUITE 201, SUNNYVALE, CA 94085, U.S.A.



PART NAME No.5



\*\* End of Report \*\*

Unless otherwise stated the results shown in this test report refer only to the sample(s) tested. This test report cannot be reproduced, except in full, without prior written permission of the Company. 除非另有說明，此報告結果僅對測試的樣品負責。本報告未經本公司書面許可，不可部份複製。  
This document is issued by the Company subject to its General Conditions of Service printed overleaf, available on request or accessible at [www.sgs.com/terms\\_and\\_conditions.htm](http://www.sgs.com/terms_and_conditions.htm) and for electronic format documents, subject to Terms and Conditions for Electronic Documents at [www.sgs.com/terms\\_e-document.htm](http://www.sgs.com/terms_e-document.htm). Attention is drawn to the limitation of liability, indemnification and jurisdiction issues defined therein. Any holder of this document is advised that information contained hereon reflects the Company's findings at the time of its intervention only and within the limits of Client's instructions, if any. The Company's sole responsibility is to its Client and this document does not exonerate parties to a transaction from exercising all their rights and obligations under the transaction documents. This document cannot be reproduced except in full, without prior written approval of the Company. Any unauthorized alteration, forgery or falsification of the content or appearance of this document is unlawful and offenders may be prosecuted to the fullest extent of the law.